



CAAC Design and Construction Update

11-17-2022



2022 Projects

New Buildings & Additions

Marshdale ES - Replacement HCM – GC GH Phipps

Ribbon Cutting

Oct 24



Jeffco Open - Auditorium Addition HCM - Bassett

Construction



Jeffco Open - Auditorium Addition HCM - Bassett

Construction



Jeffco Open - Auditorium Addition HCM - Bassett

Construction



Prospect Valley ES - Replacement MOA – GH Phipps

Construction
Move-In Jan 5 2023



Prospect Valley ES - Replacement MOA – GH Phipps

Construction



Prospect Valley ES - Replacement MOA – GH Phipps

Construction



Prospect Valley ES - Replacement MOA – GH Phipps

Construction



Prospect Valley ES - Replacement MOA – GH Phipps

Construction



Standley Lake HS – Aux Gym Addition Cannon – FCI Constructors

Construction



Standley Lake HS - Aux Gym Addition Cannon – FCI Constructors

Construction



Ralston Valley HS 10 Additional Classrooms EUA - Himmelman



Ralston Valley HS
10 Additional Classrooms
EUA - Himmelman

Construction



Efficiency Future Ready Windy Peak OEL HCM – Bryan

Construction



Efficiency Future Ready Mount Evans OEL

HCM – GH Phipps

Construction



Efficiency Future Ready
Mount Evans OEL
HCM – GH Phipps

Construction

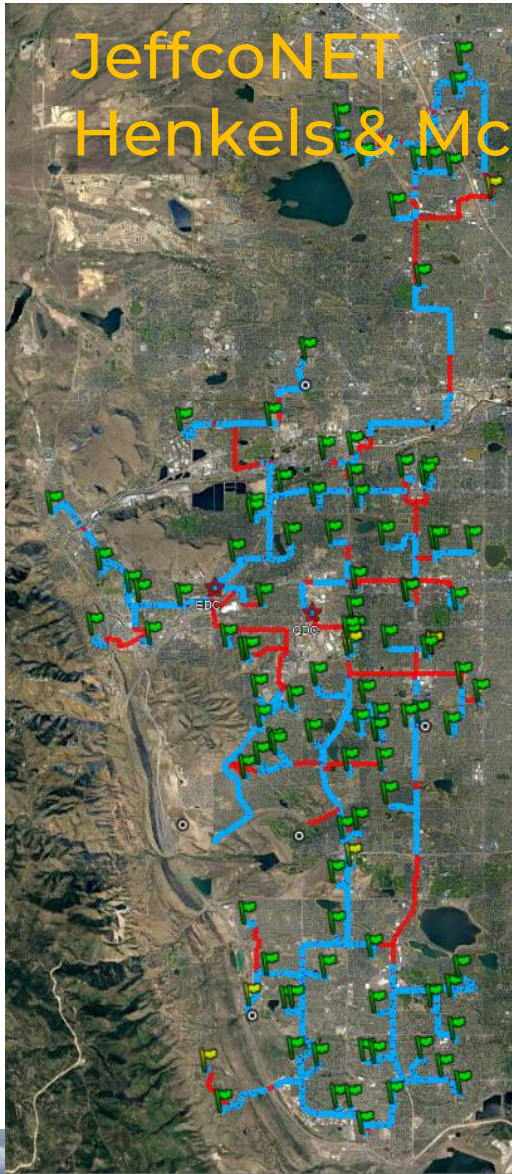


DW LED 2022 Ackerman – CMGC McKinstry



1. **Brady**
2. **Bradford North**
3. **Bradford South**
4. **Ute Meadows ES**
5. **Leawood ES**
6. **Normandy ES**
7. **Rooney Ranch ES**
8. **Creighton MS**
9. **Moore MS**
10. **Mandalay MS**
11. **Deer Creek MS**
12. **Lawrence**
13. **Weber ES**
14. **Meiklejohn**
15. **West Woods**
16. **Chatfield HS**
17. **Dakota Ridge HS**

JeffcoNET Henkels & McCoy



Project Information

Project Start
April 29, 2020

Total Miles of conduit
to be bored 114

Miles installed
98 (86%)

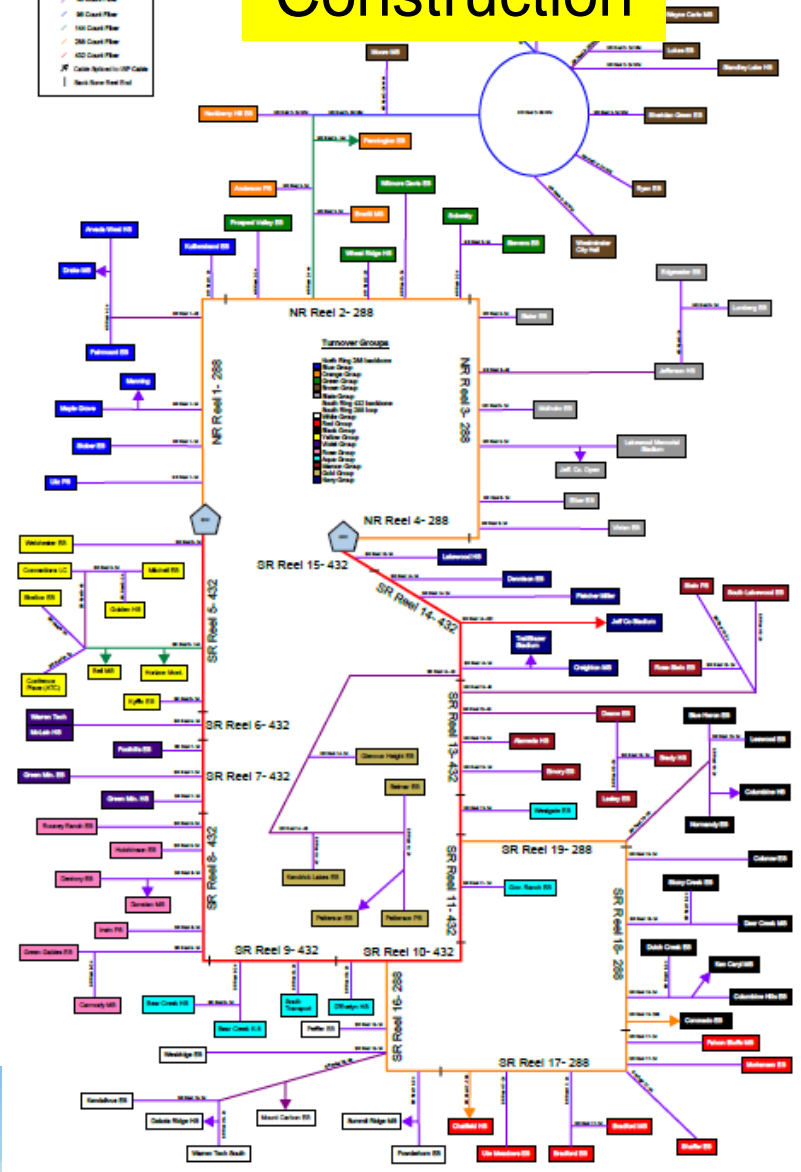
Fiber placed at
104 of 106 schools
(MDF to Street)

North Backbone turnover
to Jeffco Jan 2023



JeffCo

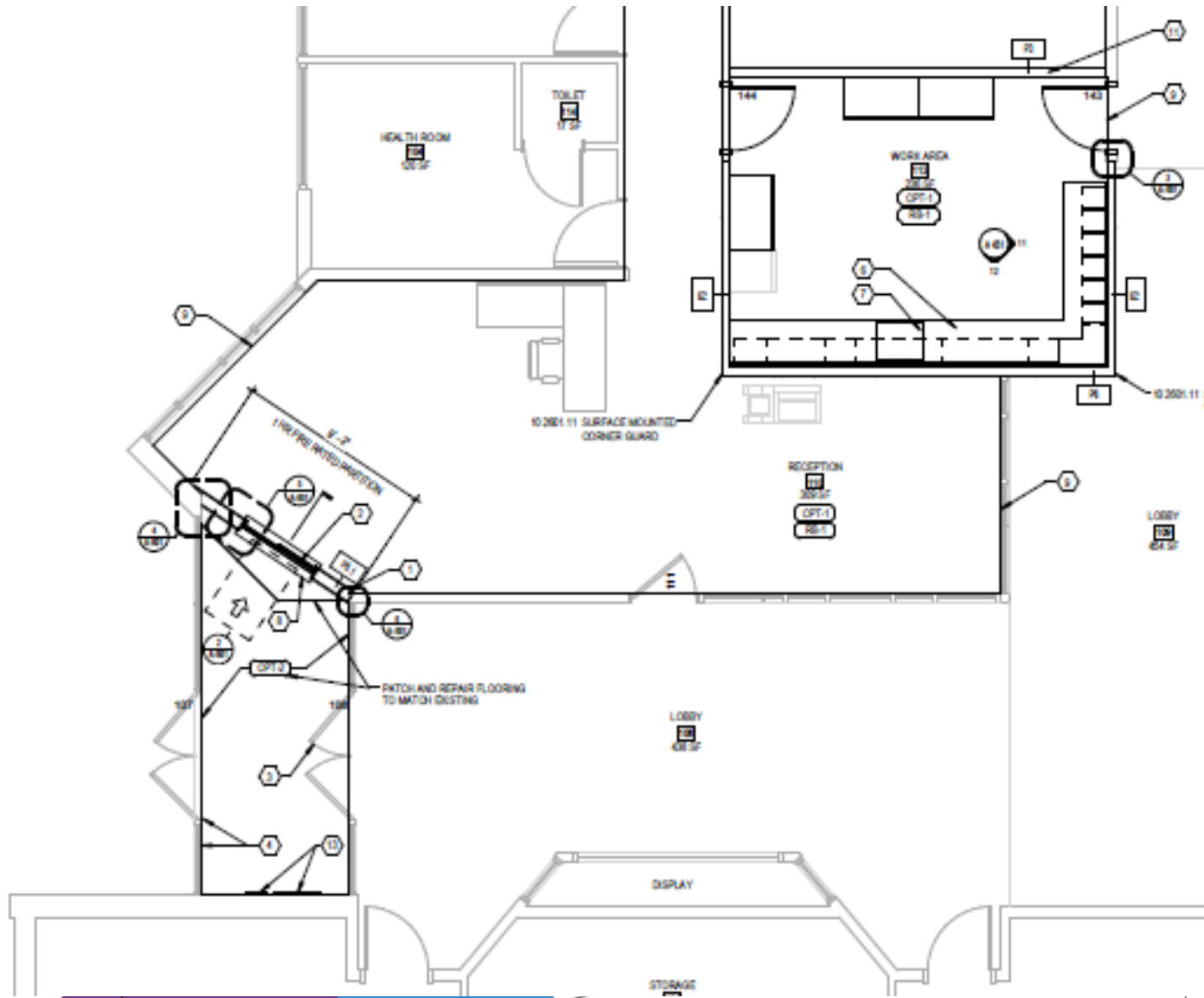
Construction



2023 Efficiency Future Ready & DW projects

Ute Meadows ES – Efficiency Future Ready MOA – Crossland

Construction



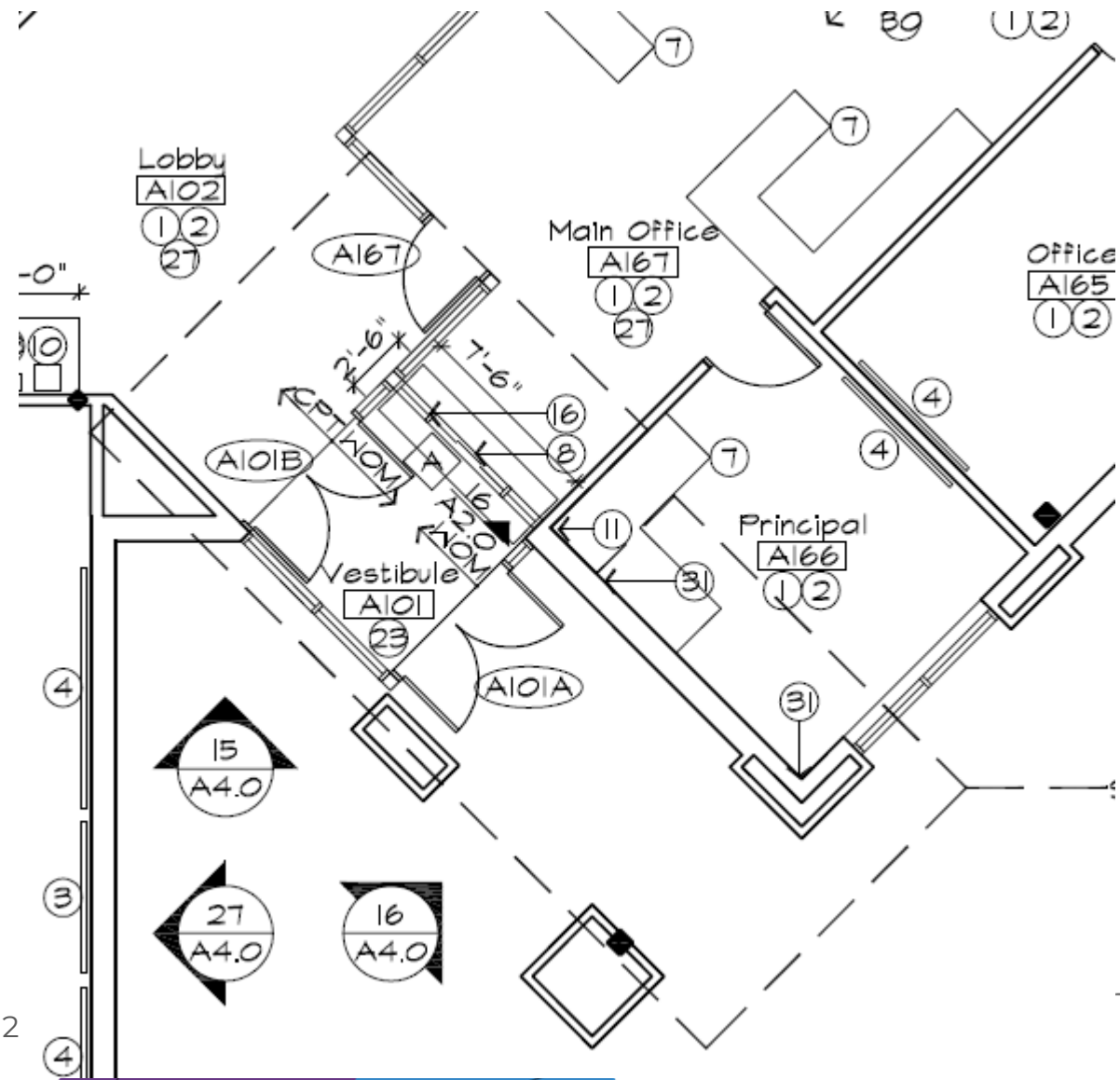
Blue Heron ES – Efficiency Future Ready MOA – Crossland

Construction



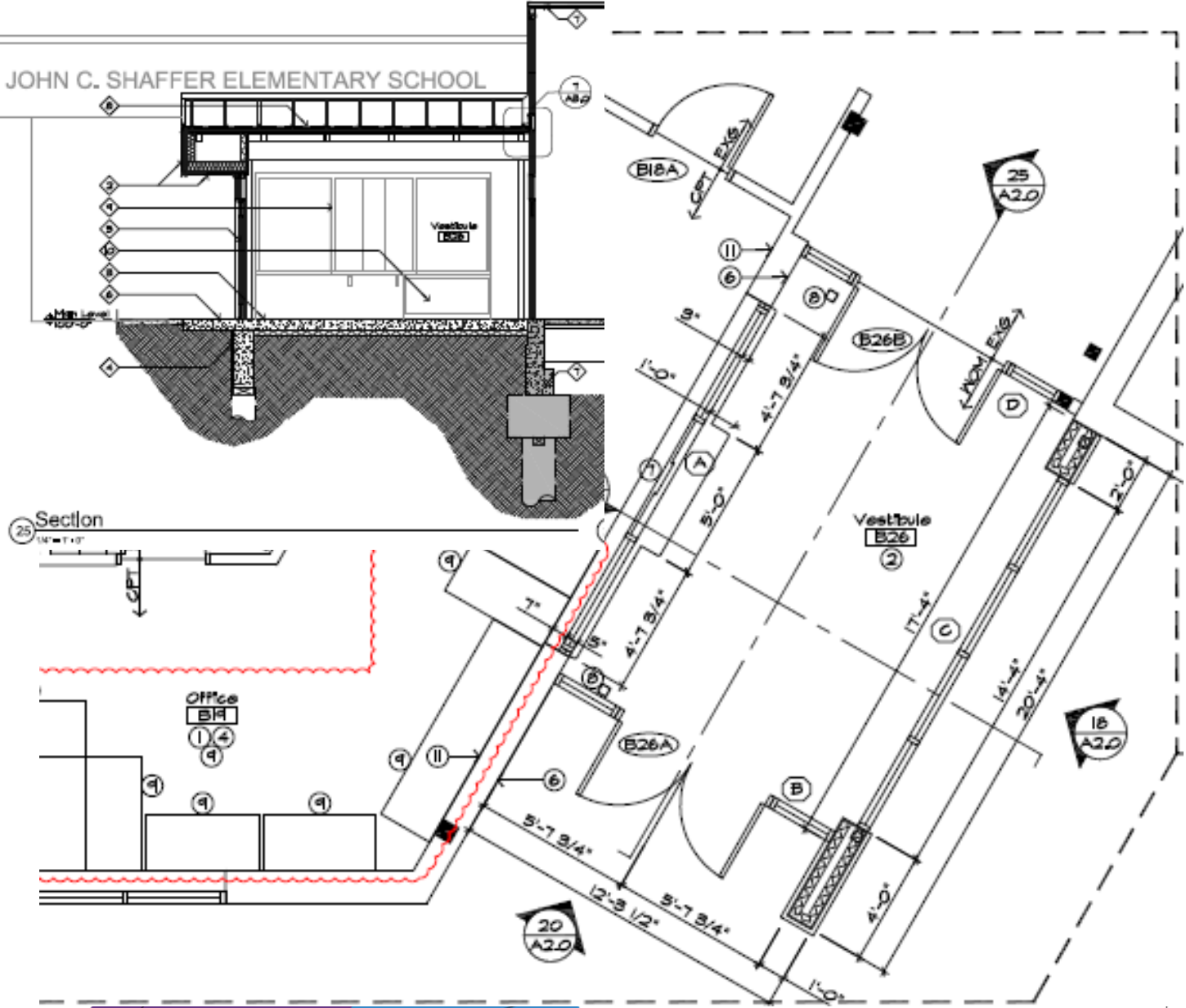
Mortensen ES – Efficiency Future Ready DLH – Crossland

Construction



Shaffer ES – Efficiency Future Ready DLH – Crossland

Construction



Wheat Ridge – Chiller

Construction

Eidos – Chiller Systems



Wheat Ridge – Electrical SwitchGear

Construction

Ackerman Engineering – MV Powers



Efficiency Future Ready Wheat Ridge HS

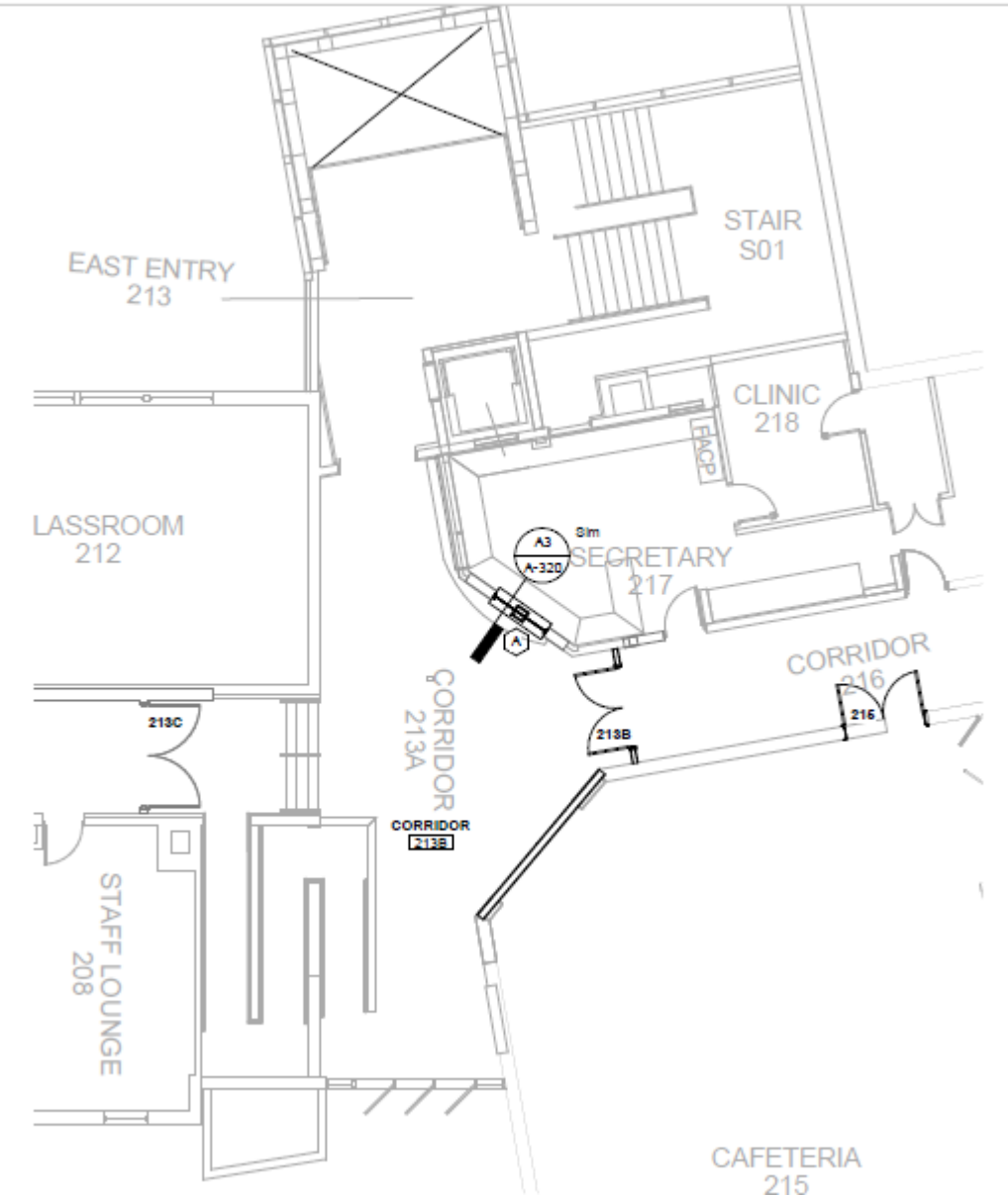
Bids 11/18/22

Eidos – TBD



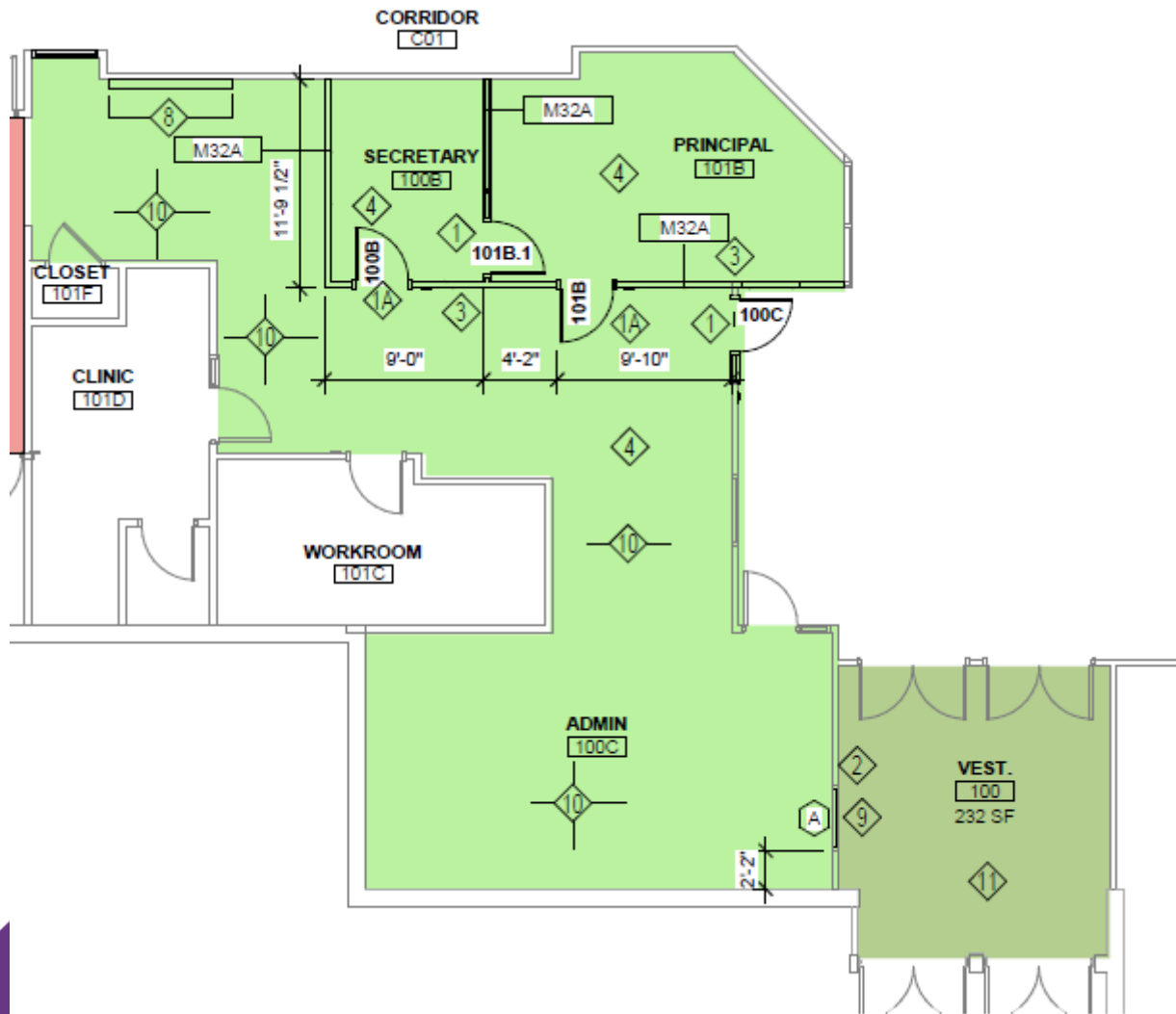
Edgewater ES – Efficiency Future Ready HCM – TBD

Bids 11/17/22



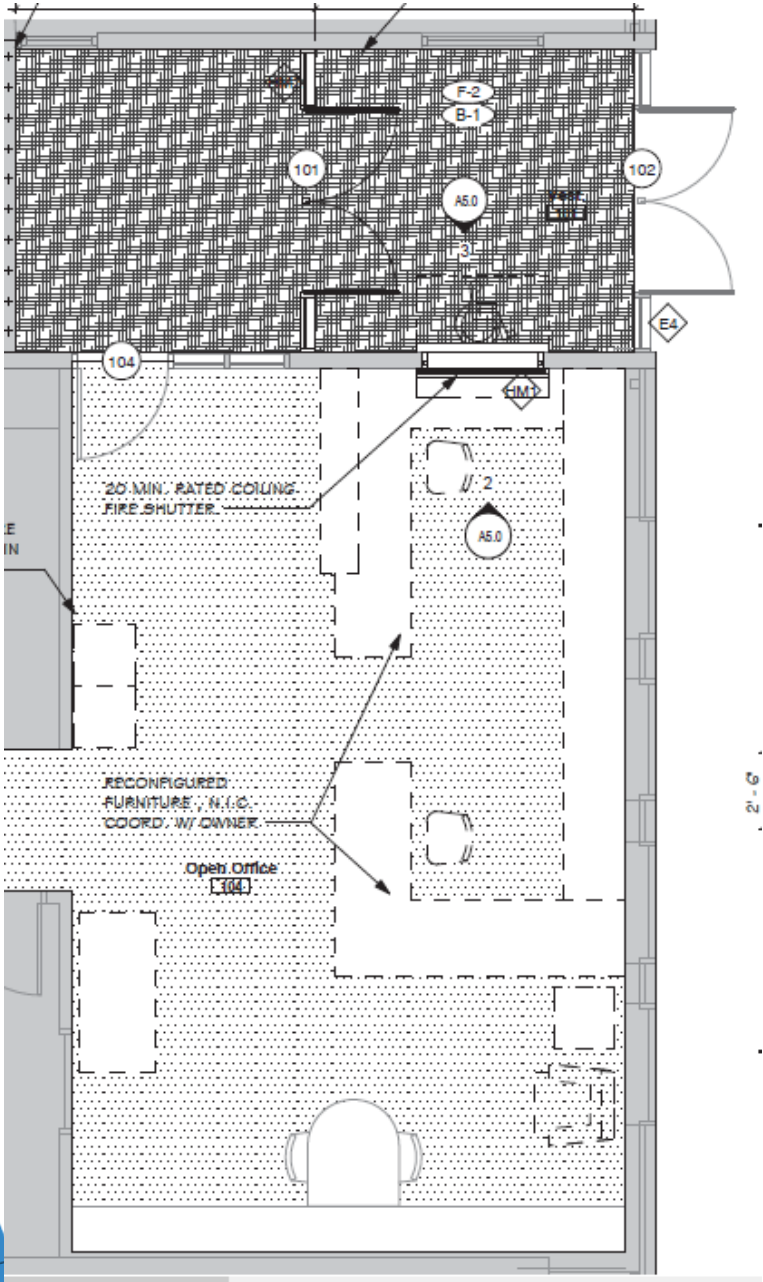
Ken Caryl MS – Efficiency Future Ready HCM – TBD

Bids 11/17/22



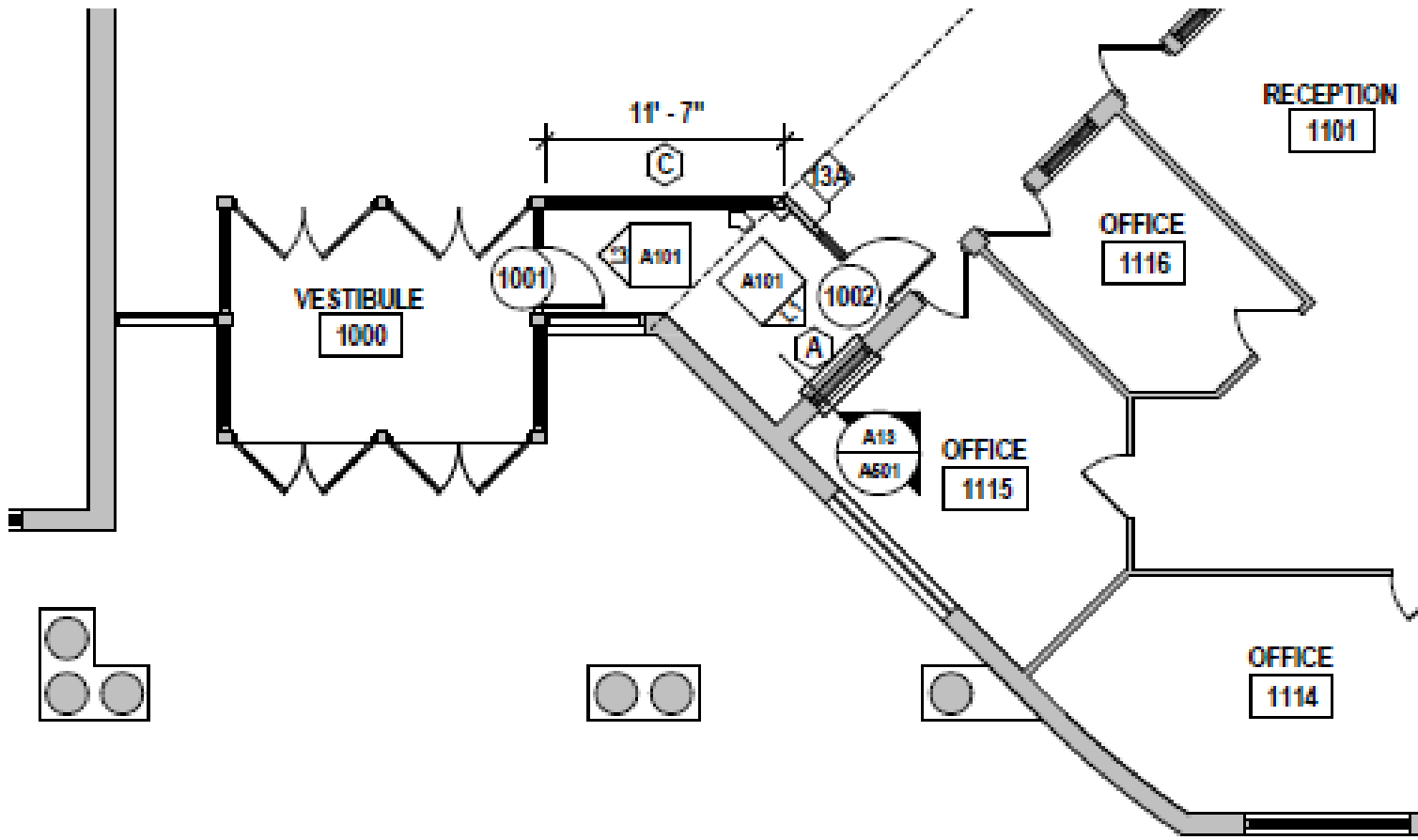
Mt Carbon – Efficiency Future Ready Eidos – TBD

Bids 12/2/22



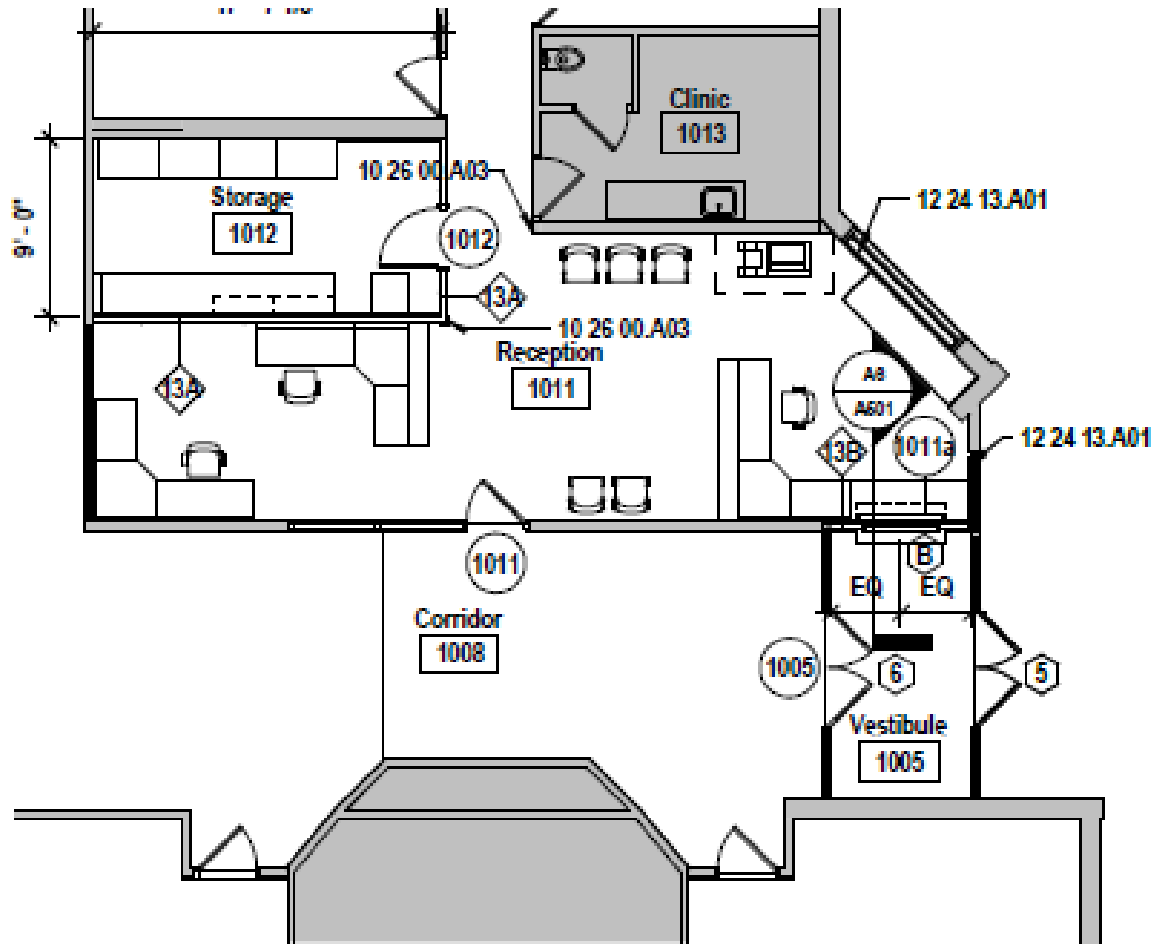
Summit Ridge MS – Efficiency Future Ready H&M – TBD

Bids 12/2/22



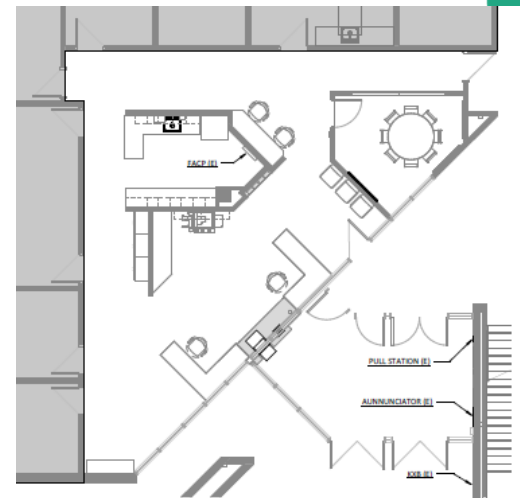
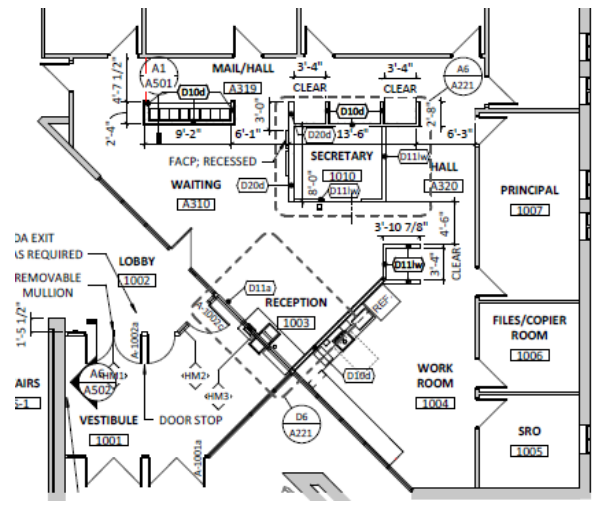
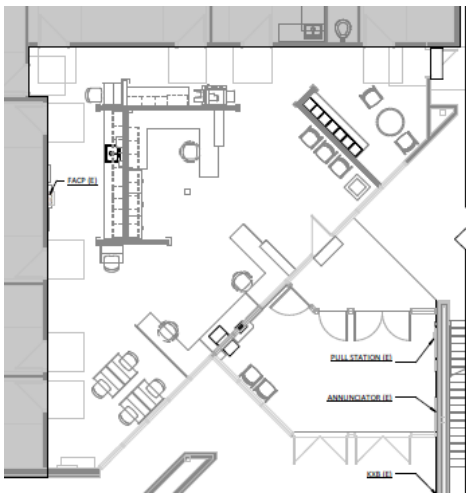
Kendallvue ES – Efficiency Future Ready H&M – TBD

Bids 12/2/22



Deer Creek, Mandalay, & Moore MS Efficiency Future Ready RB+B – TBD

Bids 12/06/22



MAIN ENTRY VESTIBULE AND ADMIN SUITE RENOVATION. NO CHANGE TO FREE EGRESS.

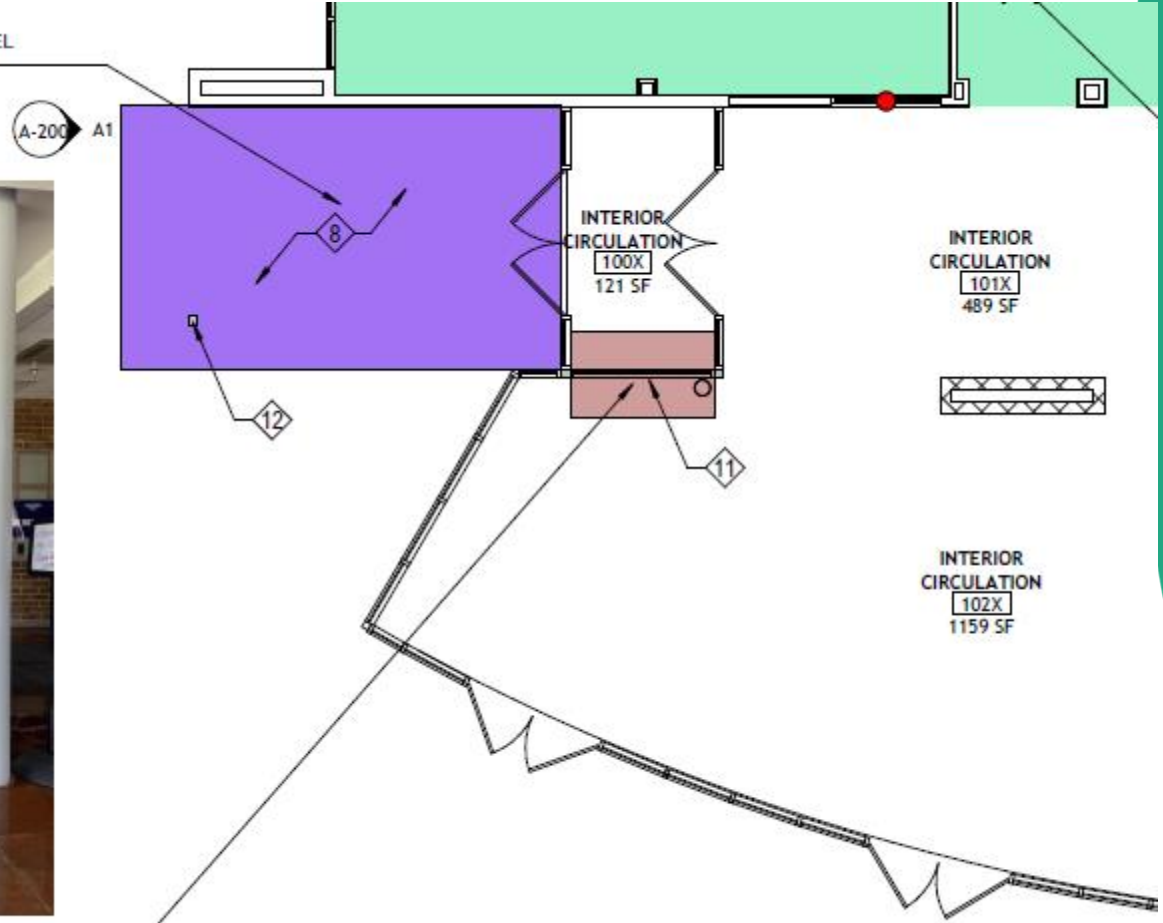
Warren Tech – Efficiency Future Ready HCM – TBD

Bids 12/8/22

MODIFY EXISTING CANOPY TO PROVIDE RECTANGULAR SHAPED CANOPY. ADD NEW STEEL COLUMN AT NEW CORNER OF CANOPY.

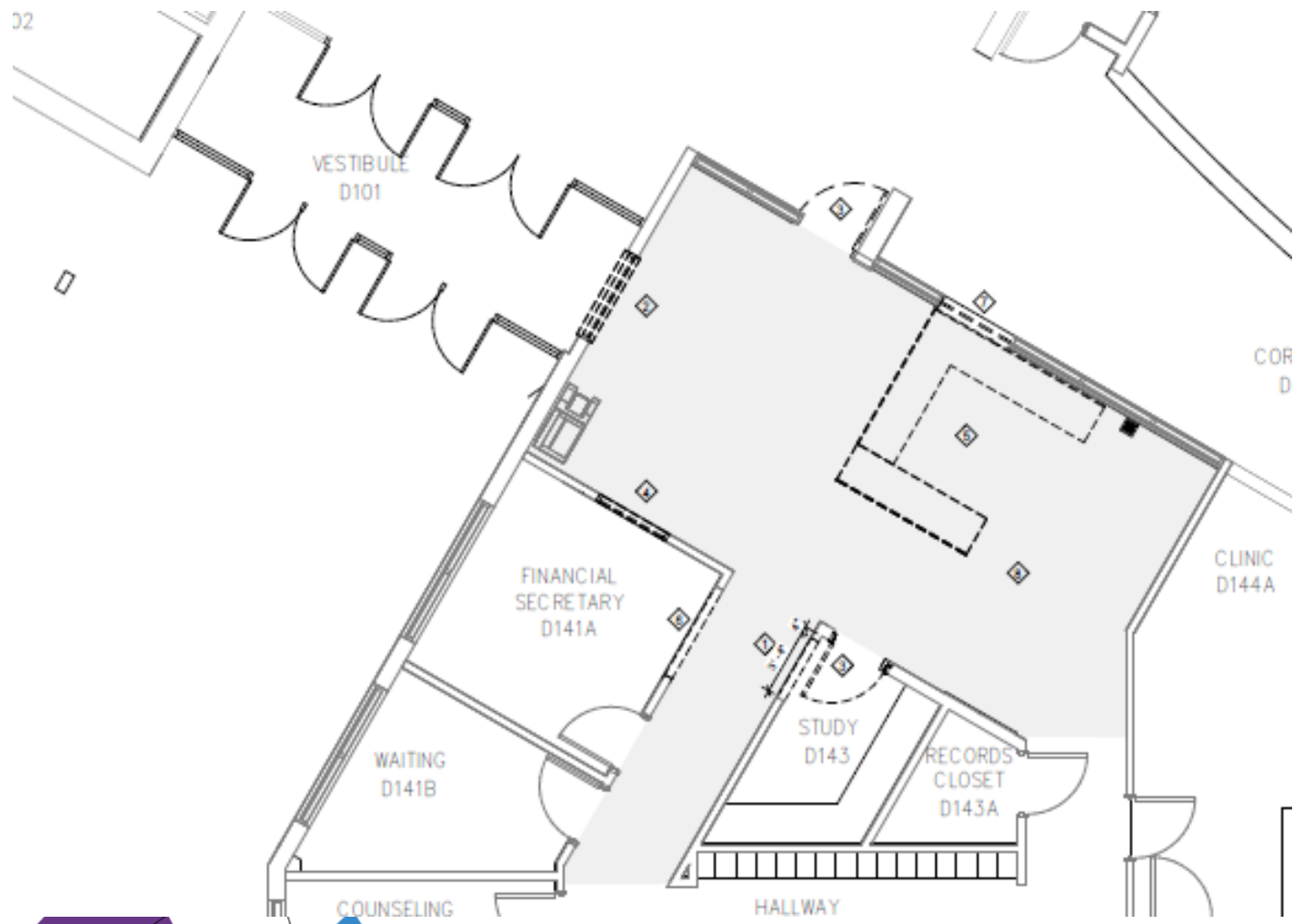


MODIFY EXISTING STOREFRONT AT INTERIOR VESTIBULE TO INSTALL NEW SECURITY TRANSACTION WINDOW



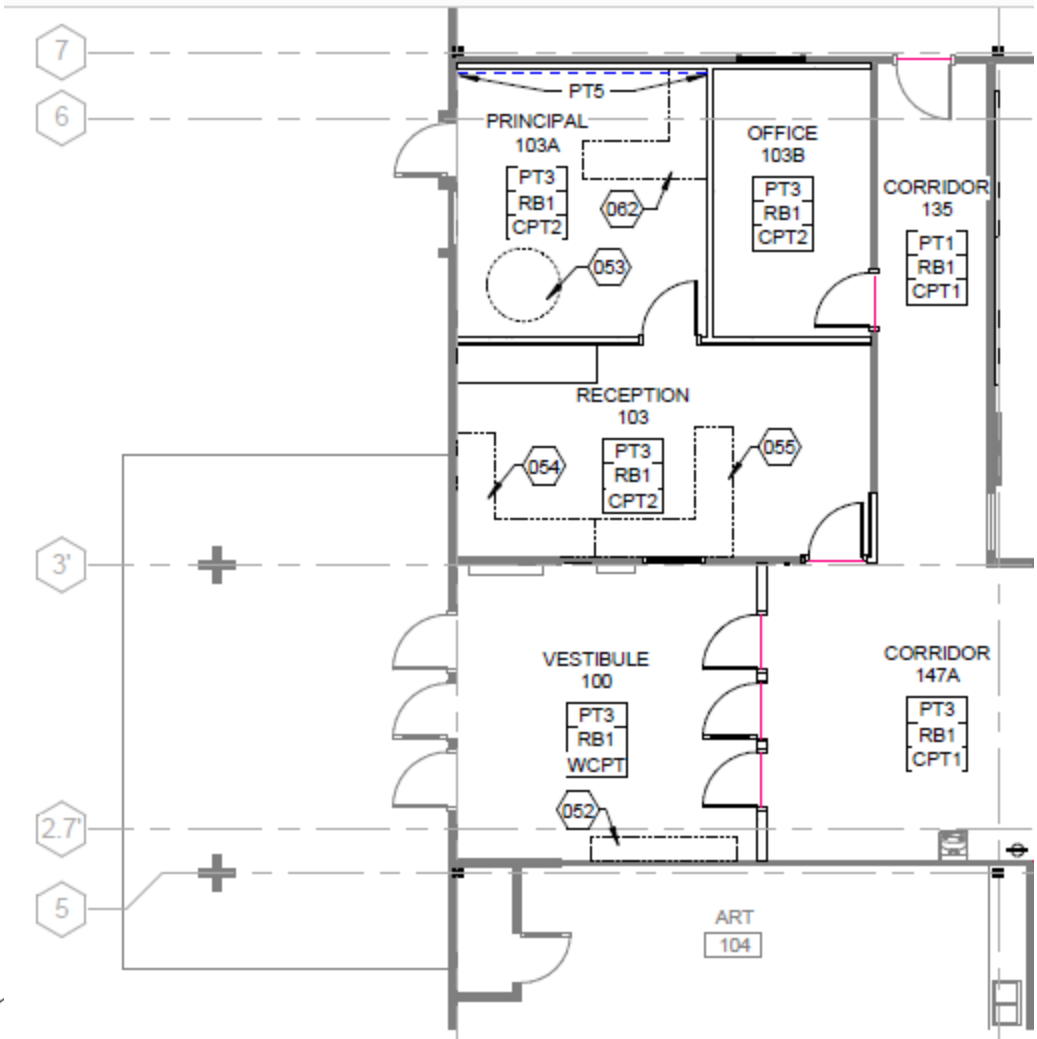
Dunstan MS – Efficiency Future Ready HCM – TBD

Bids 12/8/22



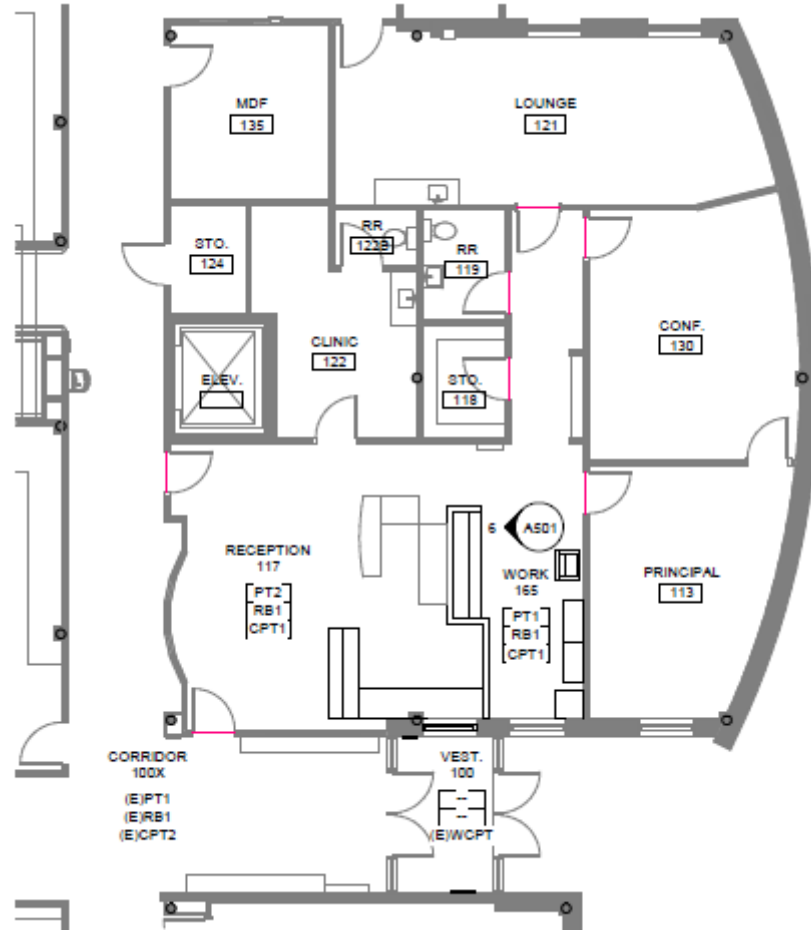
Little ES – Efficiency Future Ready Treanor HL – TBD

Bids 12/13/22



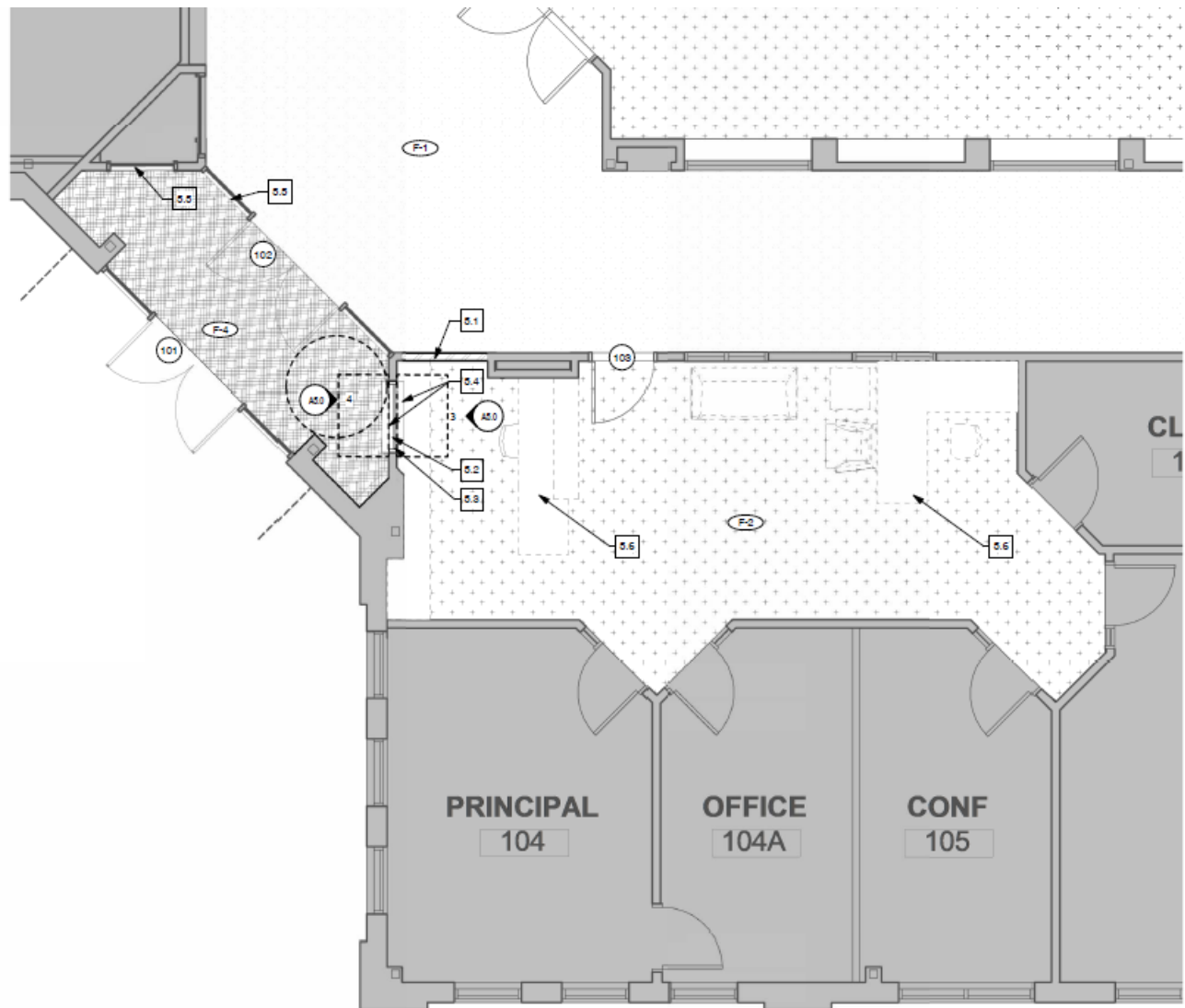
S Lakewood ES – Efficiency Future Ready Treasor HL – TBD

Bids 12/13/22



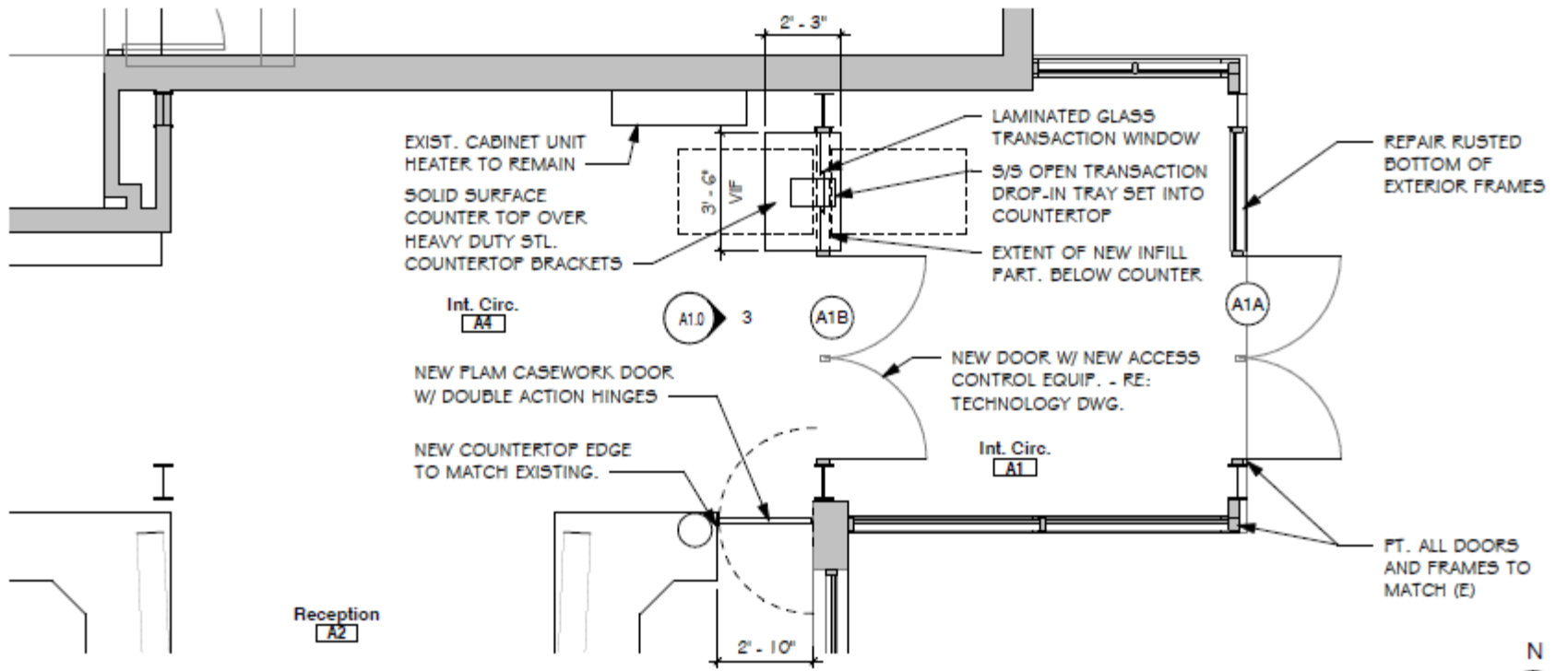
Sobesky Academy – Efficiency Future Ready Eidos – TBD

Bids 12/14/22



Pennington ES – Efficiency Future Ready Eidos – TBD

Bids 12/14/22



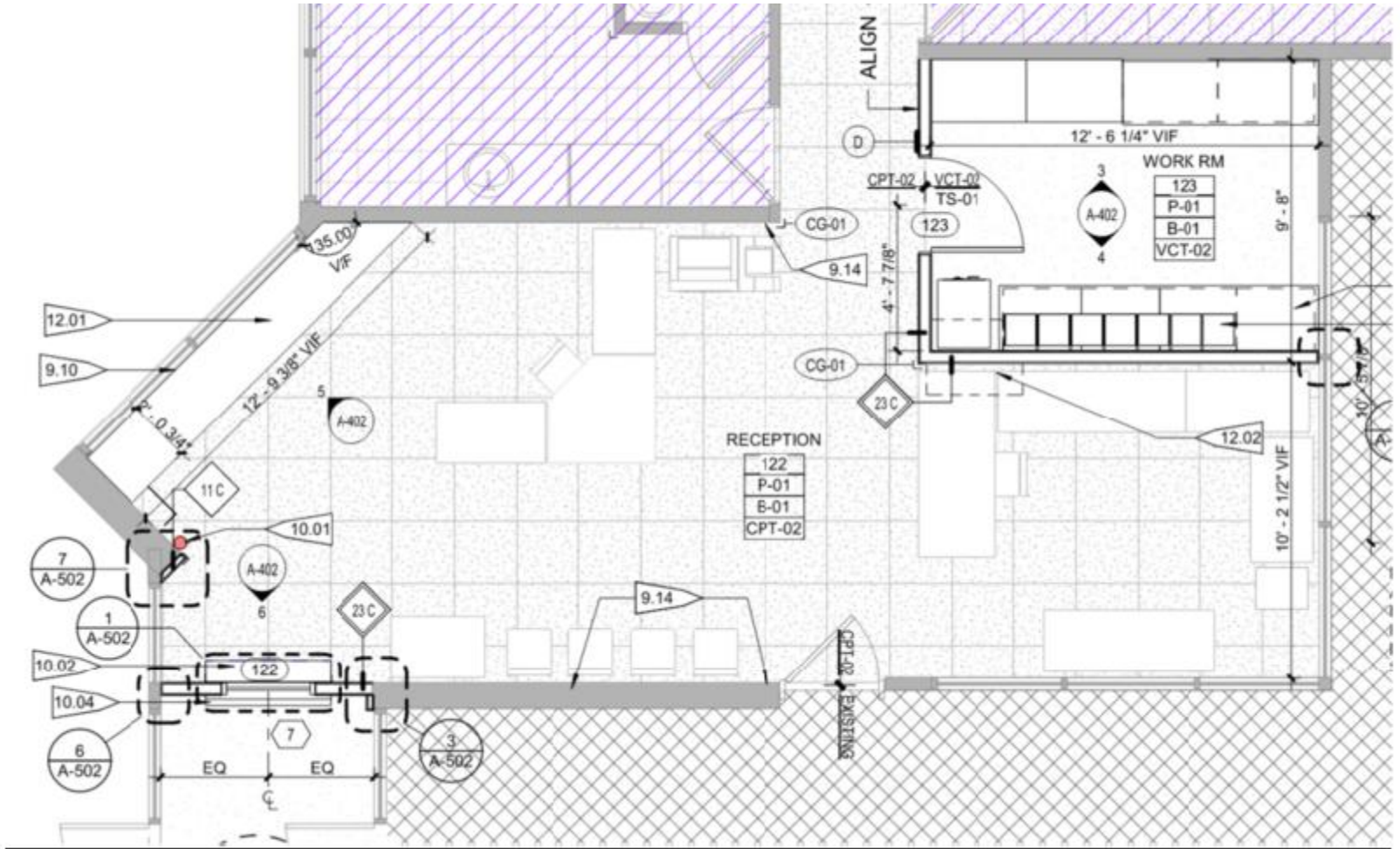
2. Enlarged Entry Plan

1/4" = 1'-0"



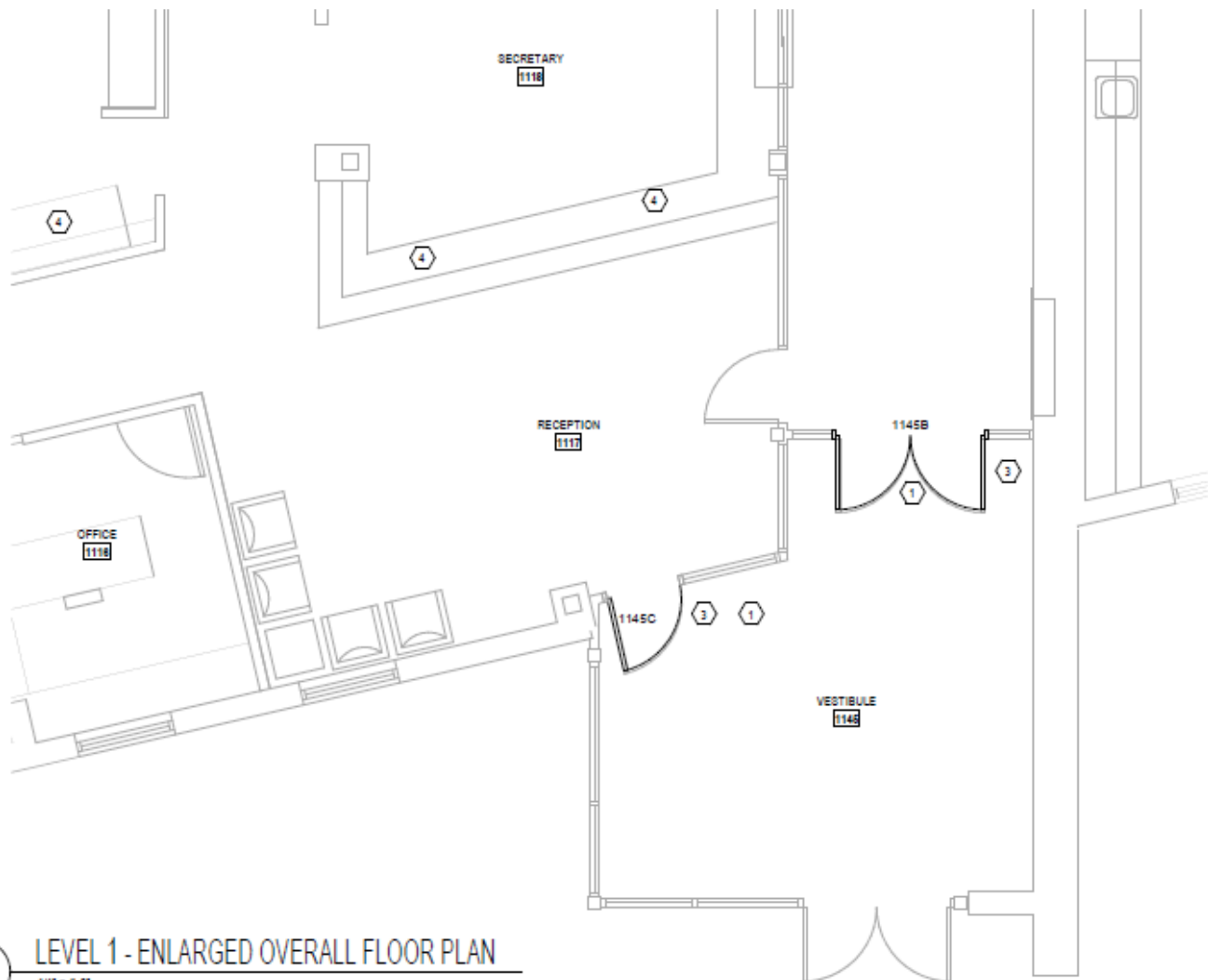
Governors Ranch – Efficiency Future Ready MOA – TBD

Bids 12/16/22



Bear Creek K8 – Efficiency Future Ready MOA – TBD

Bids 12/16/22

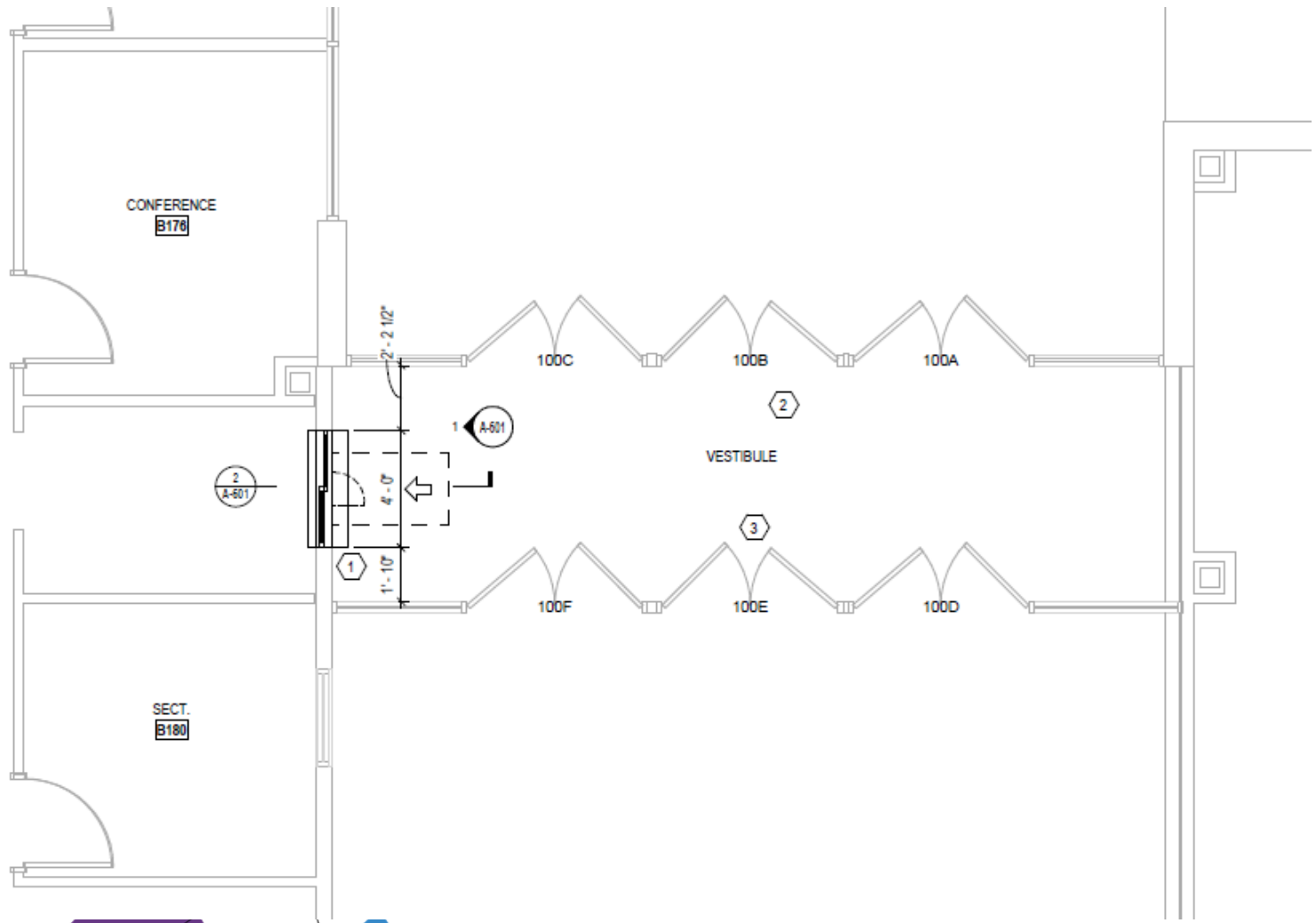


5 LEVEL 1 - ENLARGED OVERALL FLOOR PLAN
1/4" = 1'-0"



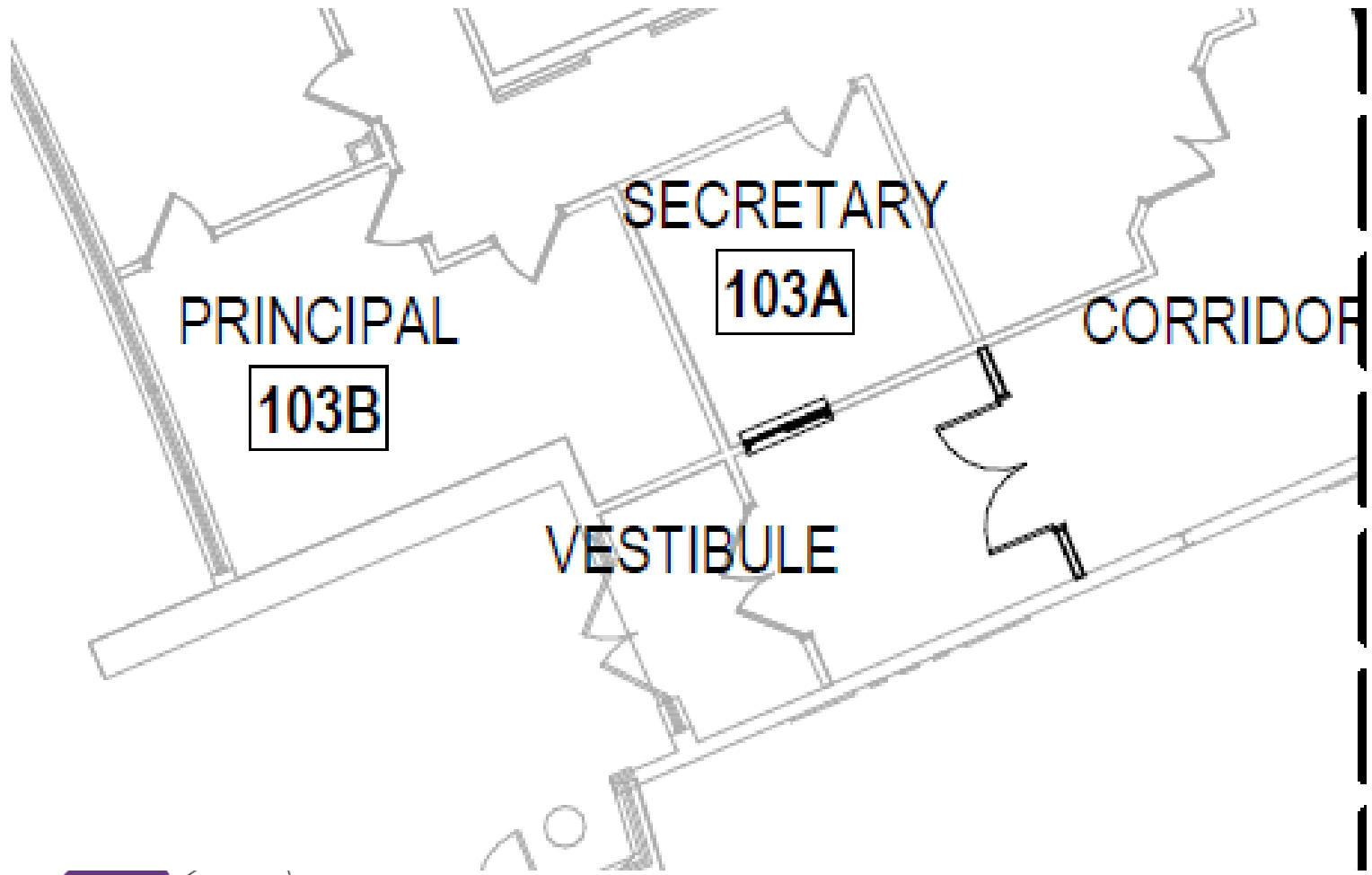
Falcon Bluffs MS – Efficiency Future Ready MOA – TBD

Bids 12/16/22



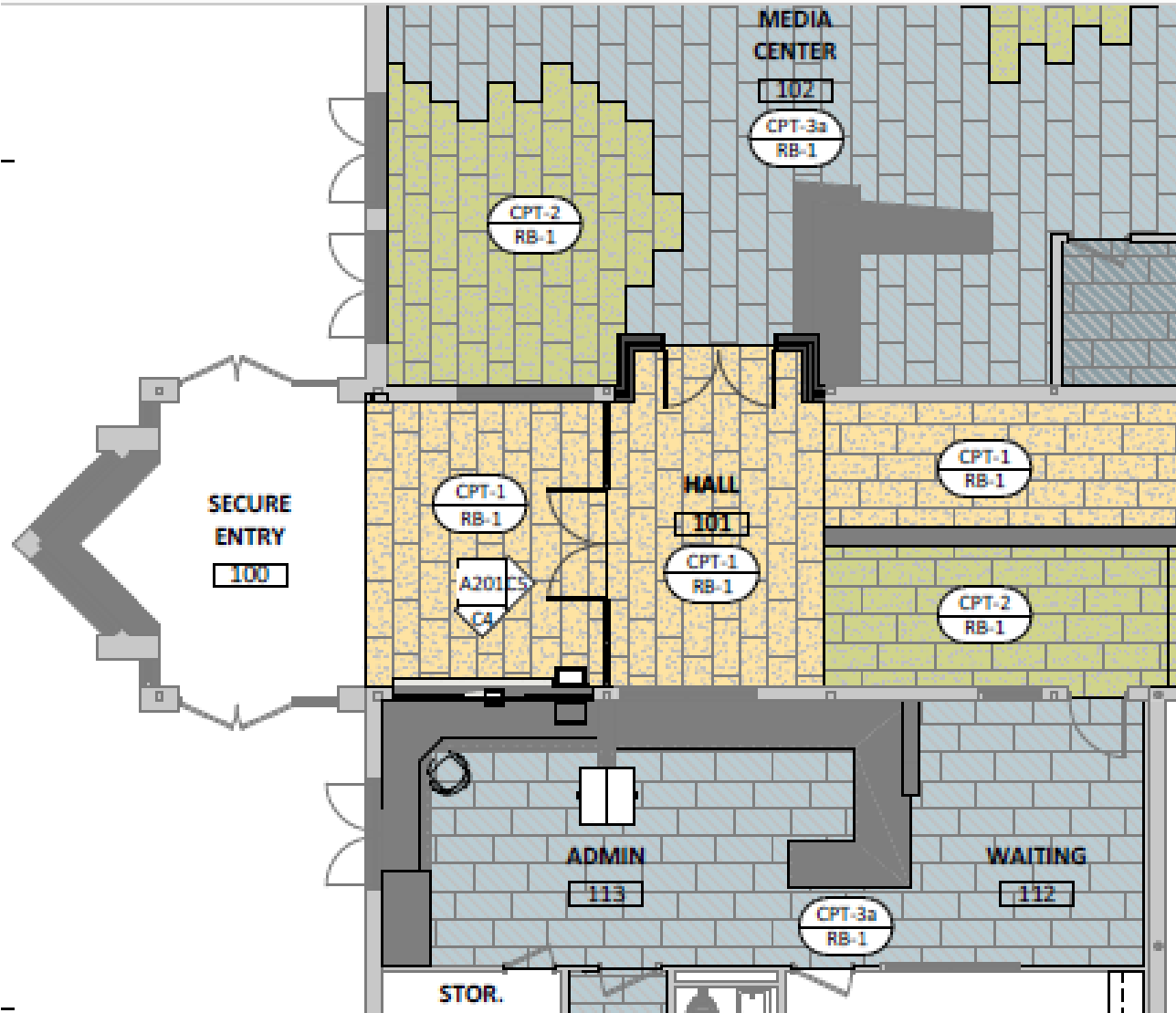
Drake MS – Efficiency Future Ready MOA – TBD

Bids 12/16/22

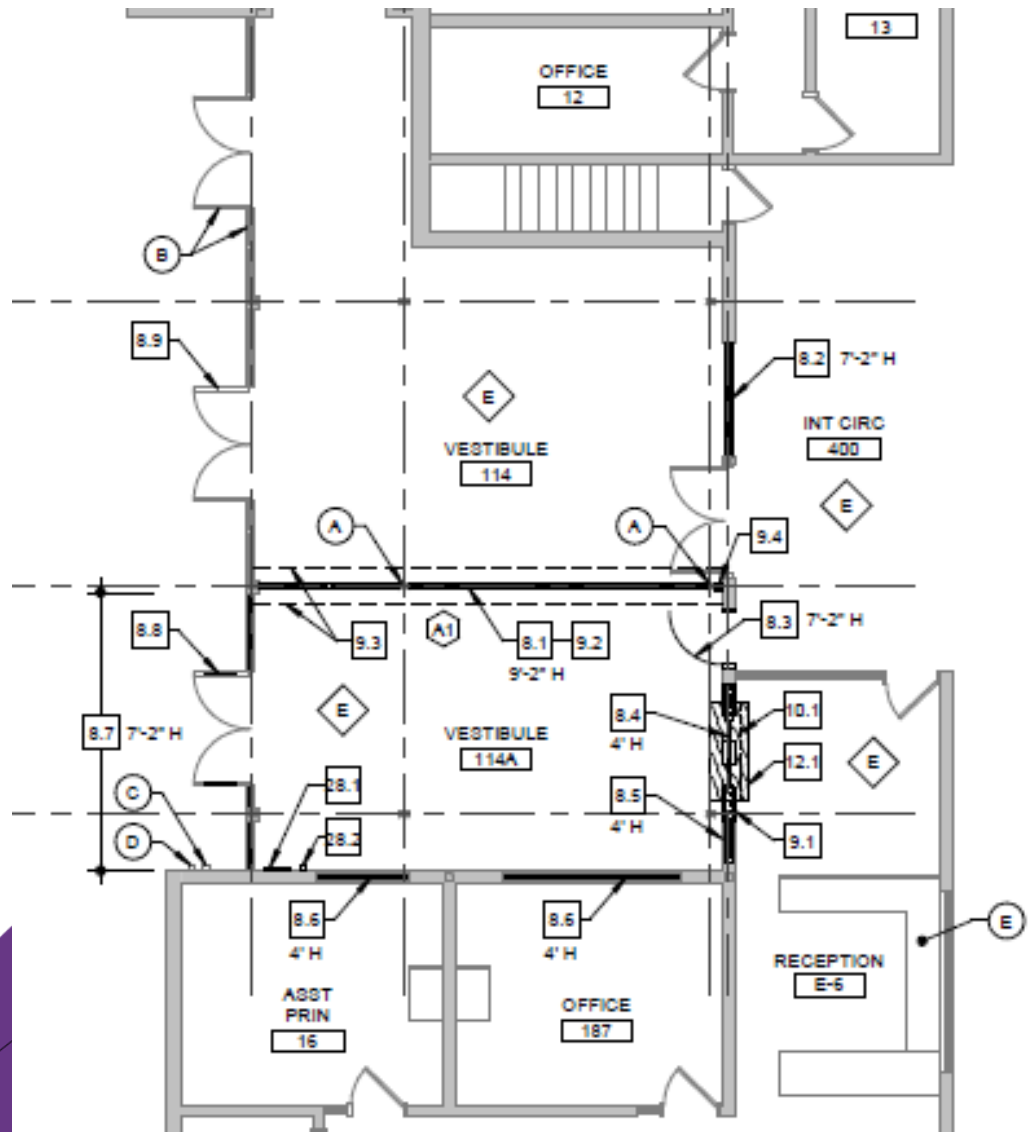


Coal Creek K8 – Efficiency Future Ready RB+B – TBD

Bids 12/20/22

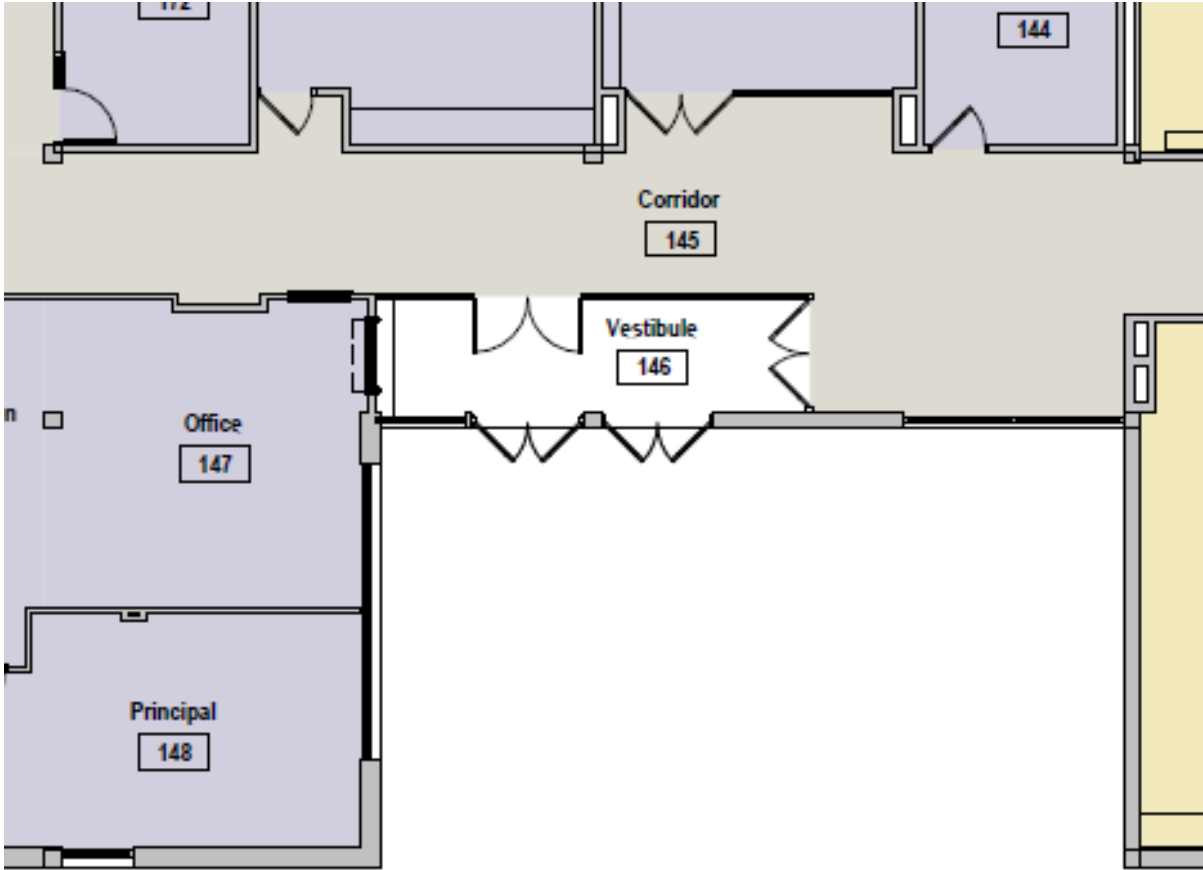


Oberon MS – Efficiency Future Ready Larson Incitti – TBD



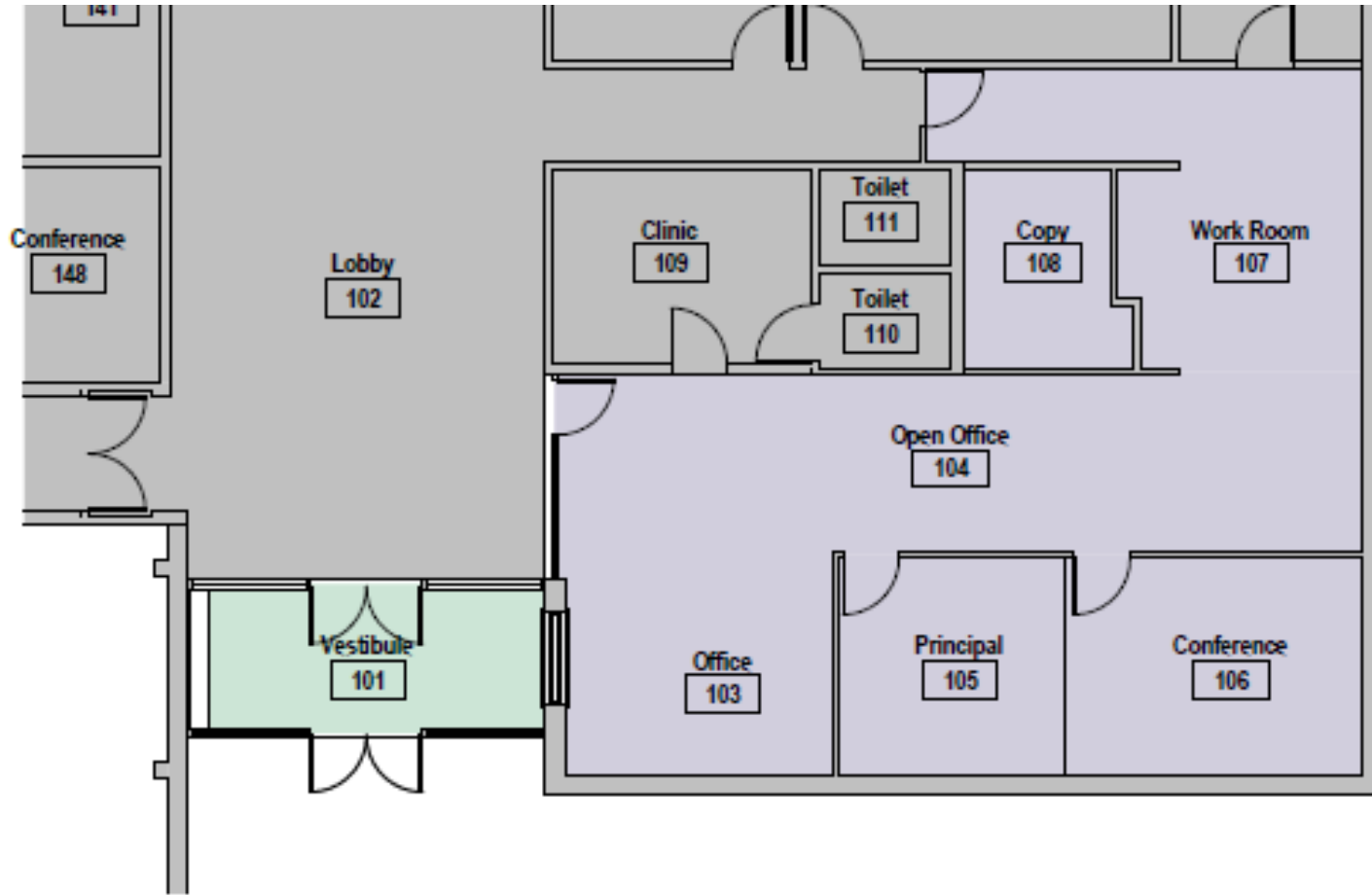
Swanson ES – Efficiency Future Ready H+M – TBD

CD



Van Arsdale ES – Efficiency Future Ready H+M – TBD

CD



Connections – Efficiency Future Ready Studiotrope – TBD

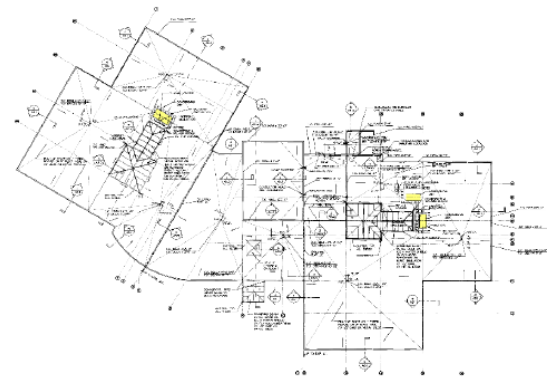
DD



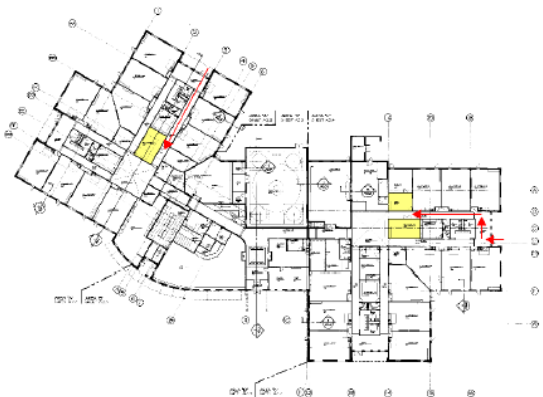
DW Mechanical 2023

West Woods ES (3-condensers, 3 –AHU's),
Bradford South (3-RTU's, Controls),
Sobesky (2-boilers)

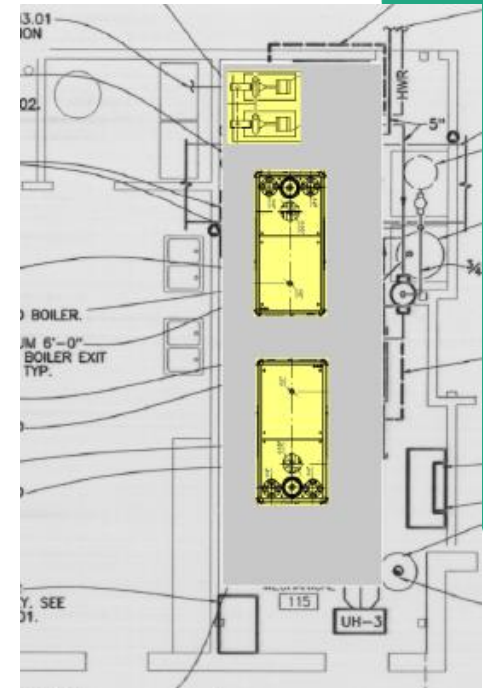
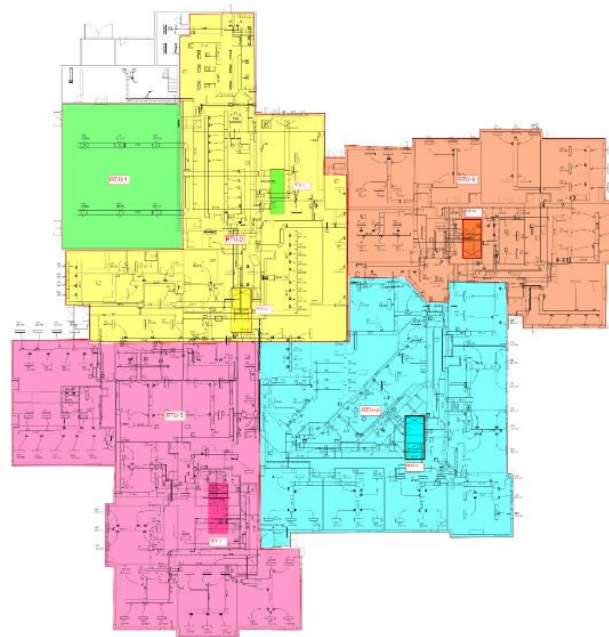
Columbine – CMGC Himmelman



ACCU locations

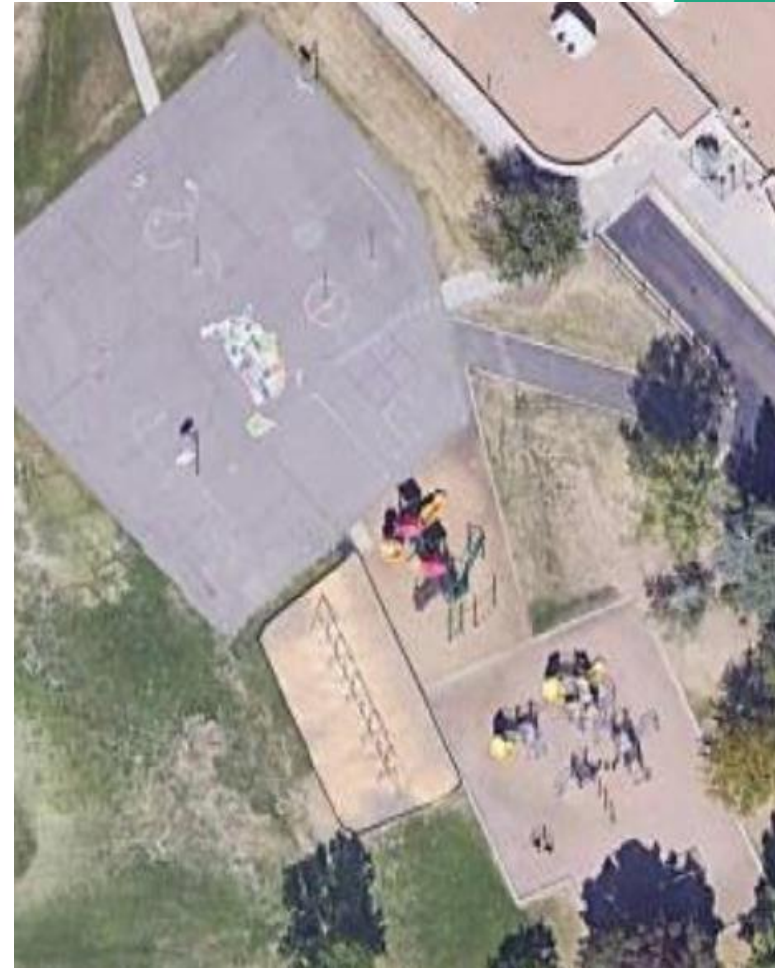
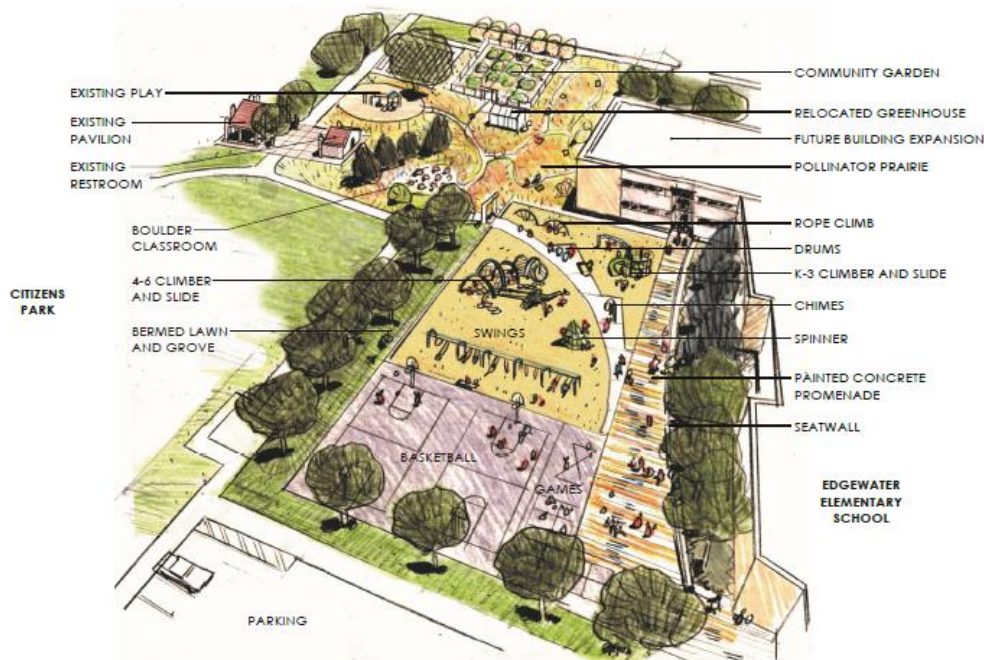


Proposed routing of new AHUs into school.



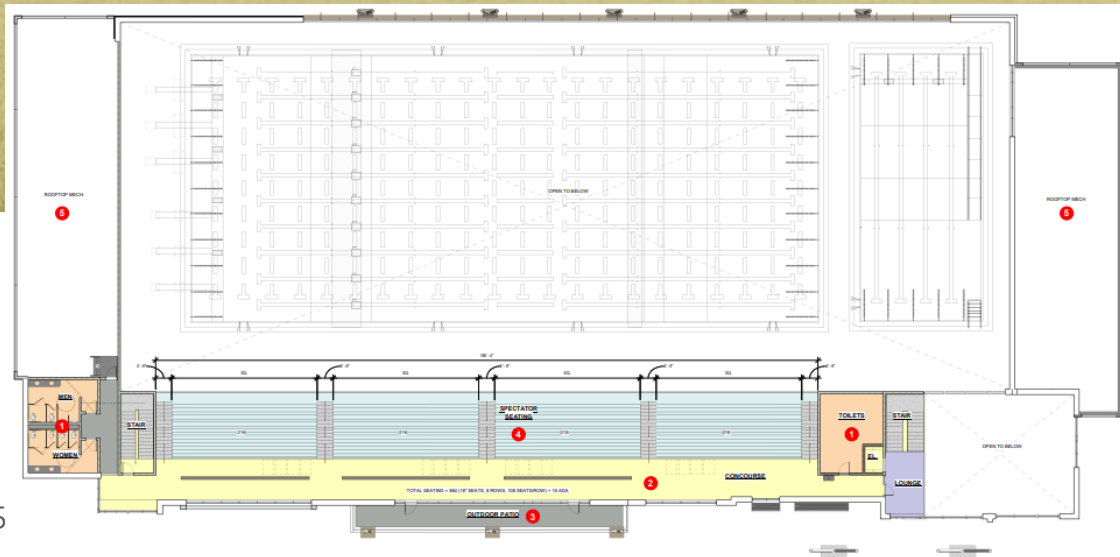
DW Playground 2023 Edgewater ES, Hutchinson ES

Design Concepts – TBD



Meyers Pool

City of Arvada / Jeffco / Apex
OLC Designs – Saunders CMGC



Program Verification & Feasibility Study – DLR Group

Fletcher Miller Special School

BOE Jun 08, 2022 - Special Meeting-Study/Dialogue Session
Capital Investments for Thriving Schools

Study Complete

Programming

Building Program Summary

Test fits will be based upon a 77,014 GSF program composed of small learning communities (suites of spaces including classrooms and other flexible learning spaces) for each cohort. This space program is based upon an enrollment of 100 students, with capacity to flex up to 115, if future staffing supports an increased enrollment. The spaces outlined for the future Fletcher Miller School are sized to accommodate adequate space for collaborative learning, specialized instruction, family and community connections, and specialized storage requirements. Additionally, to support the mobility requirements of this campus, spaces and grossing factors have been sized to either meet or exceed federally mandated American with Disabilities Act (ADA) required clearances.

Throughout each of the DAG meetings, the importance of indoor play space was discussed. These areas may be built into the presented program in a number of ways including within the dining/collaboration spaces within each of the learning communities. Therefore, it has not been included as additional square footage within the program.

PROGRAMMING



PROGRAM SUMMARY

Admin Area:	3,960 SF
Pre-K Learning:	4,925 SF
K-12 Learning:	13,590 SF
Lighthouse Learning:	5,070 SF
Jeffco Transition:	3,370 SF
Vocational:	1,600 SF
Library/Media:	3,300 SF
Food Service:	1,260 SF
Art/Music/P.E:	7,855 SF
Clinic:	1,190 SF
Therapeutic:	5,930 SF
Bldg. Support:	2,960 SF
TOTAL BUILDING AREA	77,014 SF

School Closings & Consolidations

BOE Special Meeting-Study/Dialogue Session
Thursday, August 25, 2022

Schools Closing:

Bergen Meadow ES (2024) -----
Campbell ES (2024?) (ECE Center) -----
Colorow ES (2024) -----
Emory ES -----

Glennon Heights ES (2024) -----
Green Mountain ES -----
Kullerstrand ES -----
Molholm ES (2024) -----
Parr ES (2024) -----
Peiffer ES (2024) -----
Peck ES -----
Sheridan Green -----
Thomson ES -----
Vivian ES -----
Wilmore Davis ES -----
Witt ES -----

Consolidating To:

Bergen Valley ES (7CR Addition)
Vanderhoof & Fremont (Kitchen Work)
Powderhorn ES
Lasley ES (ADA, Office & Parking)
Stein ES (ADA upgrades)
Belmar ES
Foothills ES
Prospect Valley ES (8CR Addition)
Lumberg ES
Little ES (2023)
Kendallvue ES (2023) **(Add Kitchen Work)**
Secret ES
Ryan ES
Swanson ES (2023)
Stober ES (5CR Addition + Kitchen)
Stevens ES
Lukas ES (Kitchen Work Needed)

School Closings & Consolidations

Special Meeting-Study/Dialogue Session

Thursday, August 25, 2022

DD's

Prospect Valley ES (8CR Addition) MOA & Phipps CMGC



School Closings & Consolidations

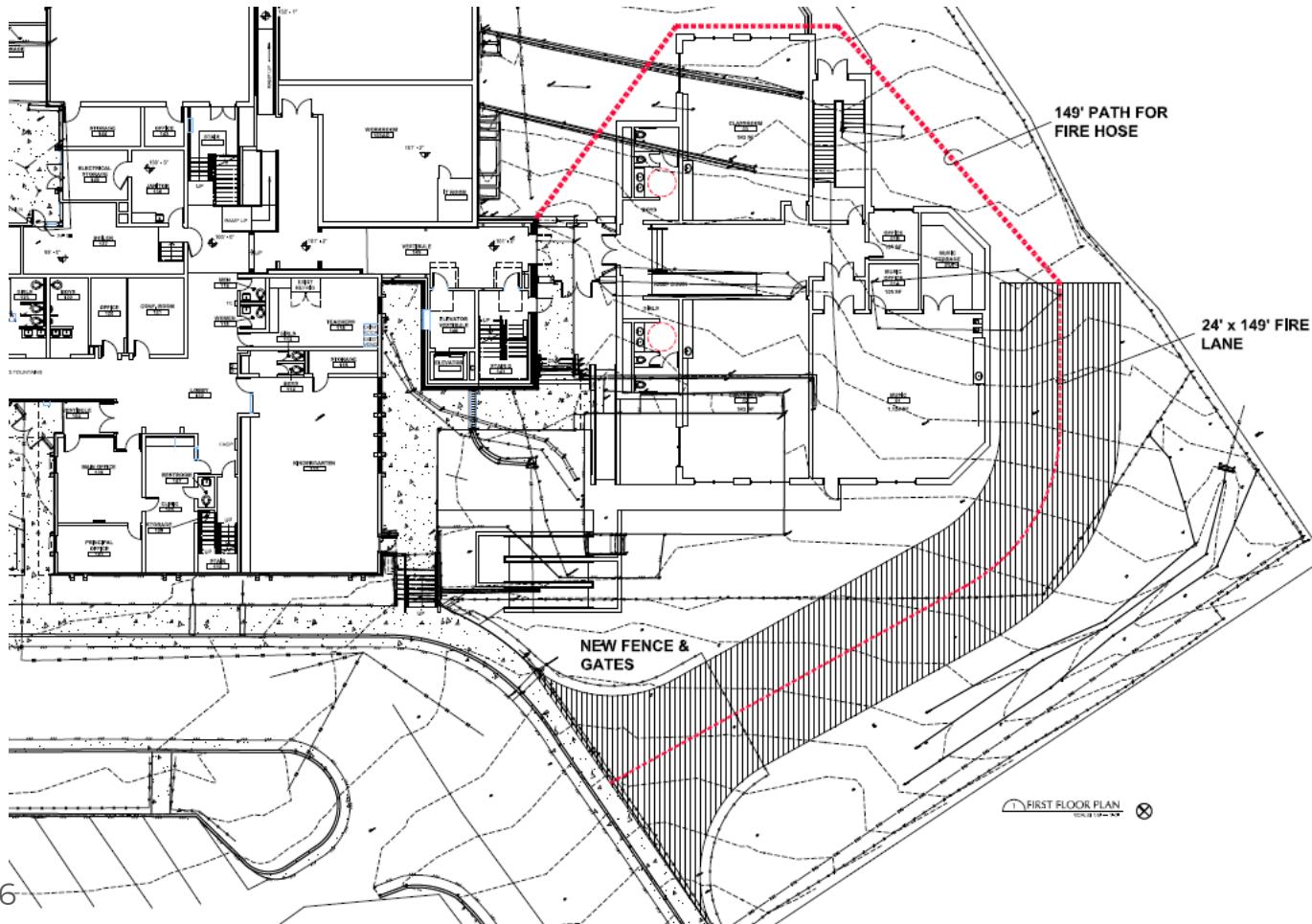
BOE Special Meeting-Study/Dialogue Session

Thursday, August 25, 2022

DD's

Stober ES

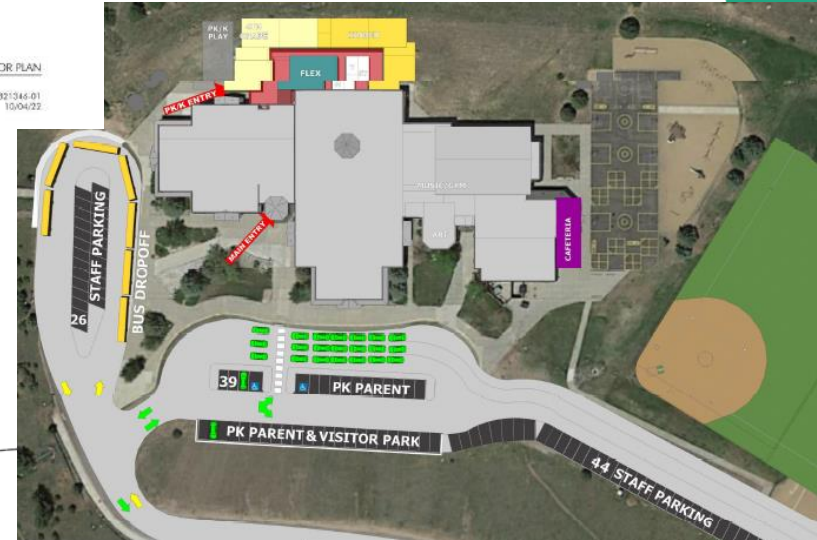
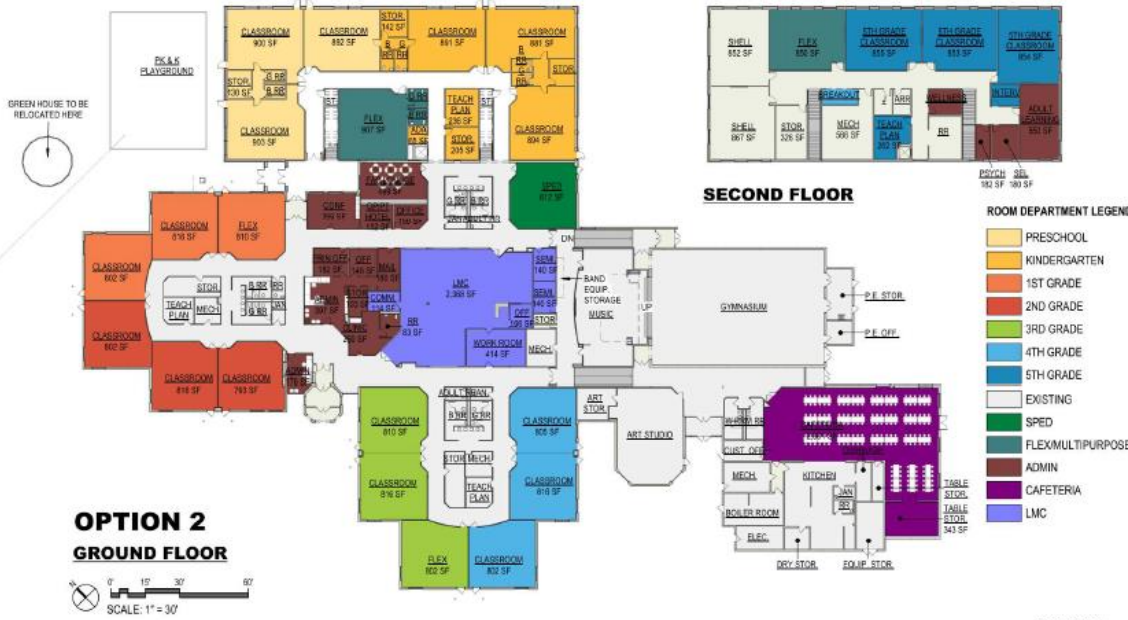
(5CR Addition + Kitchen) LOA & CMGC GTC



School Closings & Consolidations

BOE Special Meeting-Study/Dialogue Session
Thursday, August 25, 2022

Bergen Valley ES - EUA & GC TBD



School Closings & Consolidations

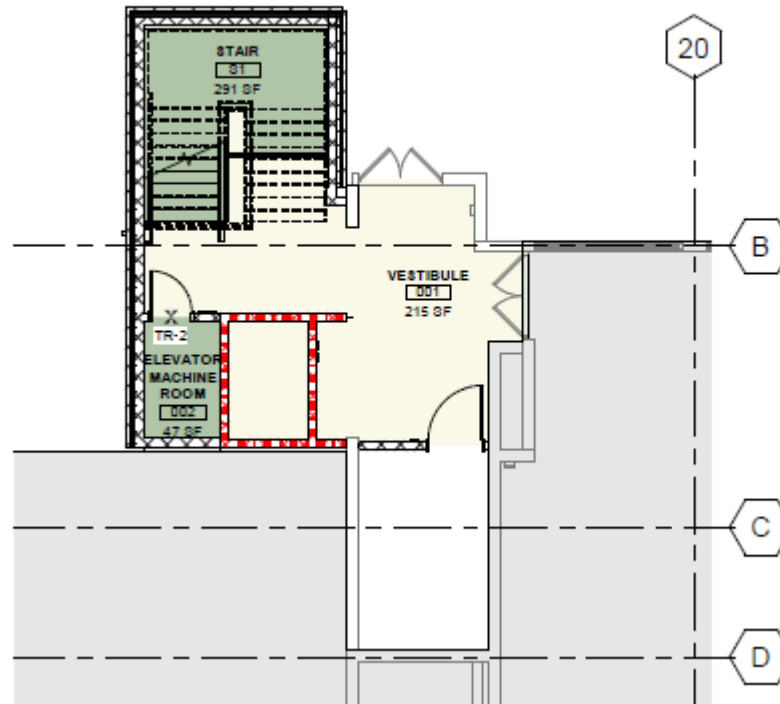
BOE Special Meeting-Study/Dialogue Session
Thursday, August 25, 2022

DD's

Stein ES

(Elevator/Stair Addition)

HCM & CMGC Himmelman

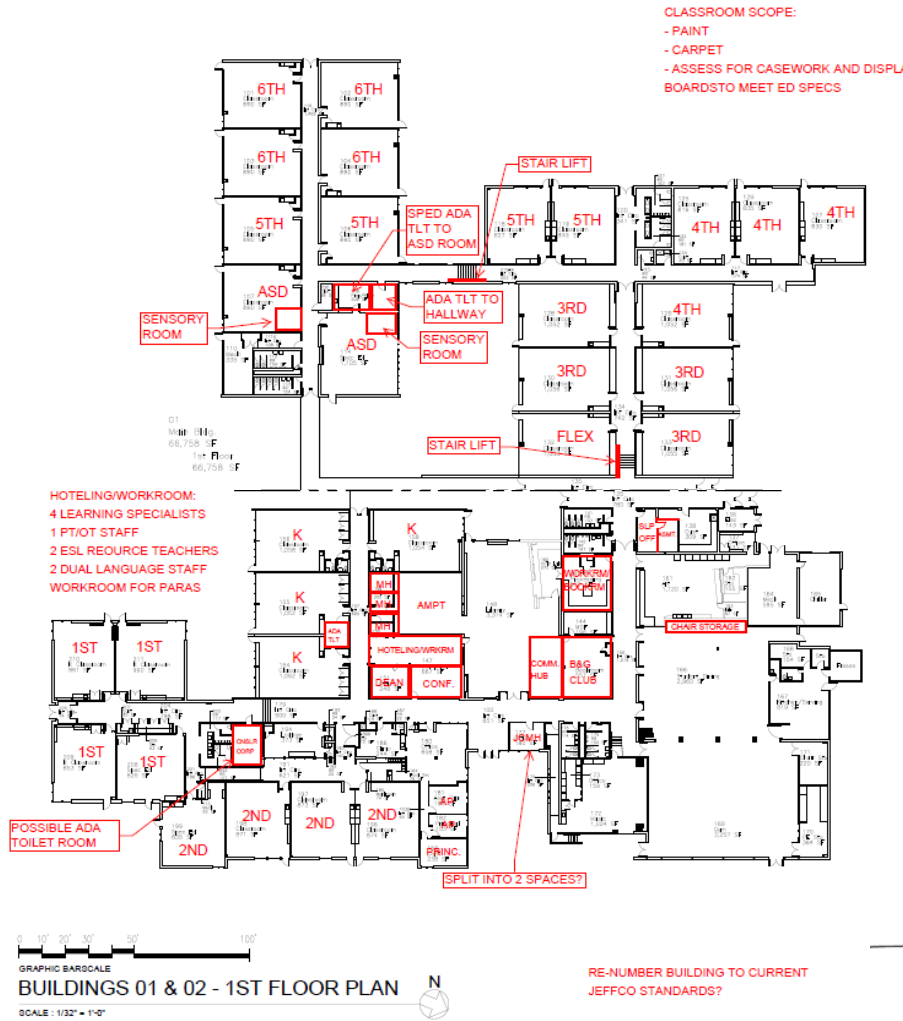


School Closings & Consolidations

BOE Special Meeting-Study/Dialogue Session
Thursday, August 25, 2022

Lasley ES

(ADA Lifts / Toilet Rooms, Admin & Parking) H&M & CMGC Bryan



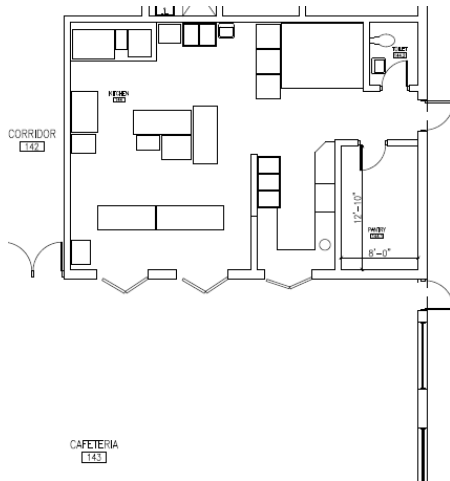
School Closings & Consolidations

BOE Special Meeting-Study/Dialogue Session
Thursday, August 25, 2022

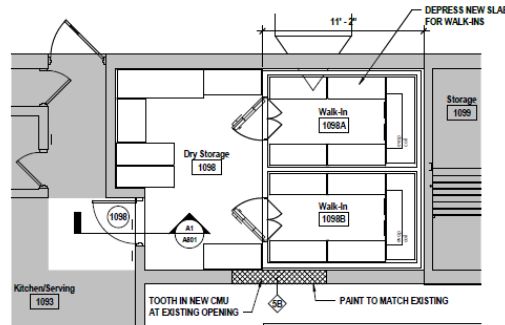
DD's

Kitchen Improvements

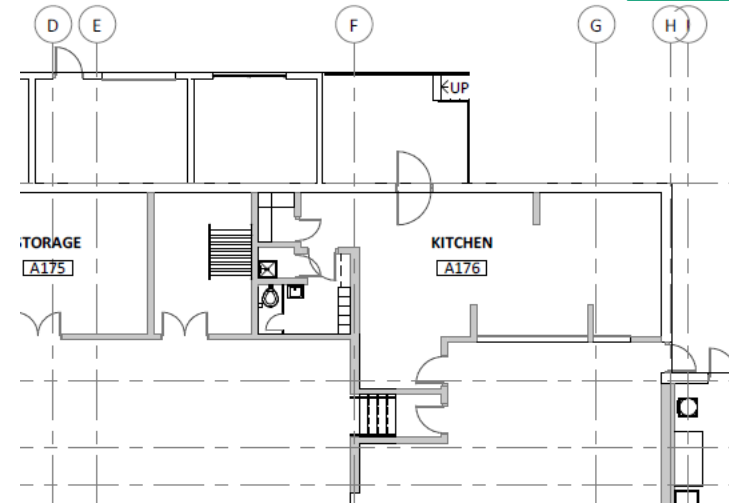
Fremont ES
(Wilmore Davis Re-design)
Eidos GC TBD



Kendallvue ES
H&M GC TBD
1,000 SF



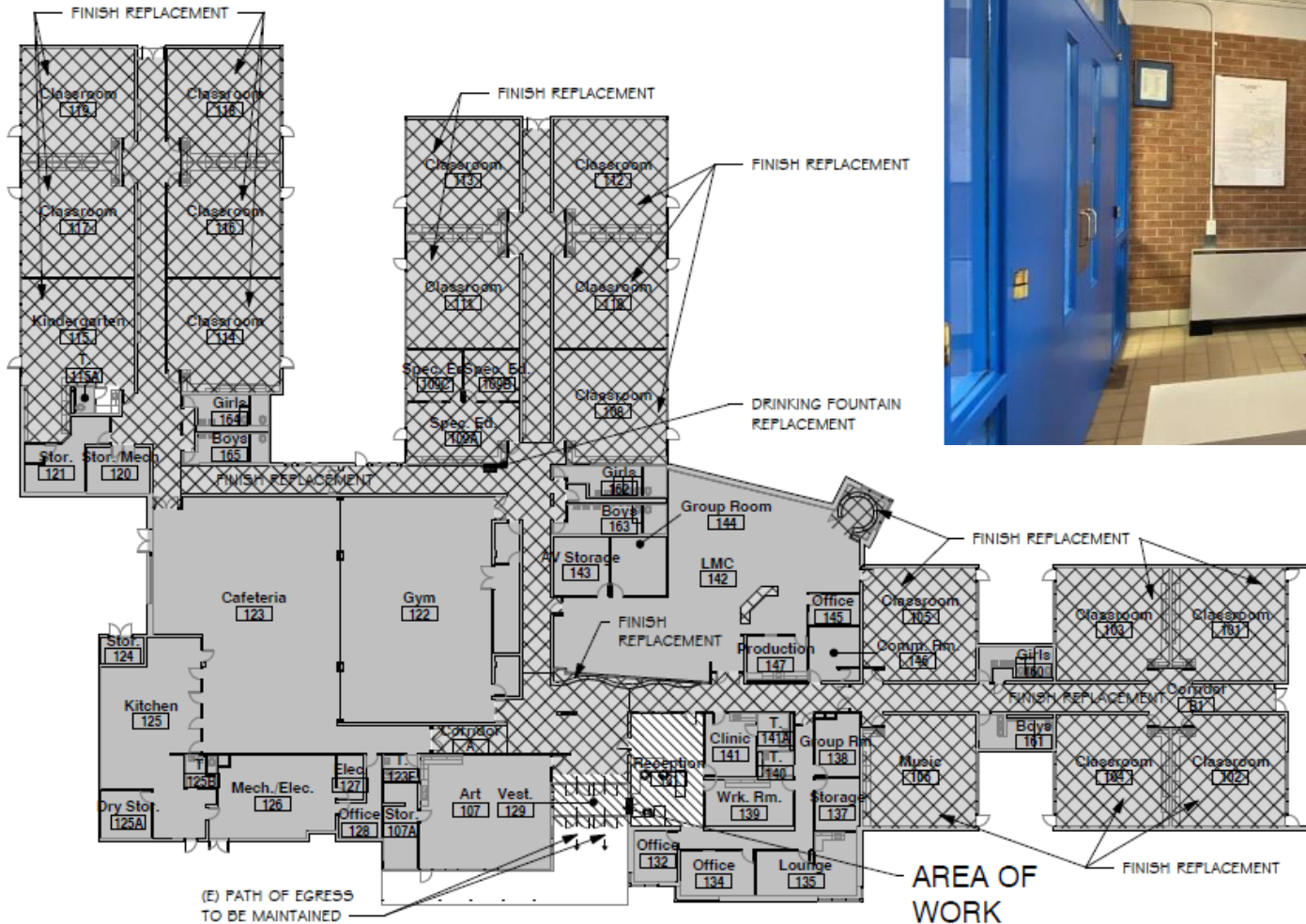
Lukas ES
H&M GC TBD
1,000 SF



School Closings & Consolidations

BOE Special Meeting-Study/Dialogue Session
Thursday, August 25, 2022

Campbell ES (ECE Center) Eidos & GC TBD



School Closings & Consolidations

BOE Special Meeting-Study/Dialogue Session
Thursday, August 25, 2022

**DW – Receiving Schools Upgrades – 15 Schools
A/E RB+B – CMGC TBD**

**Foothills, Vanderhoof, Green Gables, Hutchinson, Maple Grove,
Powderhorn, Ryan, Secrest, Semper, Sierra DB, Slater, Weber DB,
Fremont, Wheat Ridge, Standley Lake**



Next Meeting 12/15/22